



NATIONAL POWER CORPORATION

MinGen

Ref # 12289376

**PHILIPPINE BIDDING DOCUMENTS
(Procurement of INFRASTRUCTURE
PROJECTS)**

FOR

**A6M CONSTRUCTION OF STANDBY
DIESEL POWER HOUSE SPILLWAY &
INTAKE**

P.R. No.: MG-A7M25-126

Contracts Management Office
Logistics Division

Sixth Edition
July 2020
Rev.7

TABLE OF CONTENTS

GLOSSARY OF	4
TERMS, ABBREVIATIONS, AND ACRONYMS	4
SECTION I. INVITATION TO BID	7
SECTION II. INSTRUCTIONS TO BIDDERS	11
1. Scope of Bid	12
2. Funding Information	12
3. Bidding Requirements	12
4. Corrupt, Fraudulent, Collusive, Coercive, and Obstructive Practices	13
5. Eligible Bidders	13
6. Origin of Associated Goods	13
7. Subcontracts	13
8. Pre-Bid Conference	14
9. Clarification and Amendment of Bidding Documents	14
10. Documents Comprising the Bid: Eligibility and Technical Components	14
11. Documents Comprising the Bid: Financial Component	15
12. Alternative Bids	15
13. Bid Prices	15
14. Bid and Payment Currencies	15
15. Bid Security	15
16. Sealing and Marking of Bids	16
17. Deadline for Submission of Bids	16
18. Opening and Preliminary Examination of Bids	18
19. Detailed Evaluation and Comparison of Bids	18
20. Post Qualification	17
21. Signing of the Contract	17
SECTION III. BID DATA SHEET	18
SECTION IV. GENERAL CONDITIONS OF CONTRACT	23
1. Scope of Contract	24
2. Sectional Completion of Works	24
3. Possession of Site	24
4. The Contractor's Obligations	24
5. Performance Security	25

6. Site Investigation Reports.....	25
7. Warranty.....	25
8. Liability of the Contractor.....	25
9. Termination for Other Causes.....	26
10. Dayworks.....	
11. Program of Work.....	26
12. Instructions, Inspections and Audits.....	26
13. Advance Payment.....	27
14. Progress Payments.....	27
15. Operating and Maintenance Manuals.....	27
SECTION V. SPECIAL CONDITIONS OF CONTRACT.....	28
SECTION VI. SPECIFICATIONS.....	30
SECTION VII. DRAWINGS.....	74
SECTION VIII. BILL OF QUANTITIES.....	87
SECTION IX. CHECKLIST OF TECHNICAL AND FINANCIAL DOCUMENTS.....	ERROR!
BOOKMARK NOT DEFINED.90	
FORM OF BID SECURITY (SURETY BOND).....	97
CONTRACTOR'S ORGANIZATIONAL CHART FOR THE CONTRACT.....	100
JOINT VENTURE AGREEMENT.....	108
BID FORM.....	111
SUMMARY SHEETS OF MATERIALS PRICES, LABOR RATES AND EQUIPMENT RENTAL RATES.....	115

Glossary of Terms, Abbreviations, and Acronyms

ABC – Approved Budget for the Contract.

ARCC – Allowable Range of Contract Cost.

BAC – Bids and Awards Committee.

Bid – A signed offer or proposal to undertake a contract submitted by a bidder in response to and in consonance with the requirements of the bidding documents. Also referred to as *Proposal* and *Tender*. (2016 revised IRR, Section 5(c))

Bidder – Refers to a contractor, manufacturer, supplier, distributor and/or consultant who submits a bid in response to the requirements of the Bidding Documents. (2016 revised IRR, Section 5(d))

Bidding Documents – The documents issued by the Procuring Entity as the bases for bids, furnishing all information necessary for a prospective bidder to prepare a bid for the Goods, Infrastructure Projects, and/or Consulting Services required by the Procuring Entity. (2016 revised IRR, Section 5(e))

BIR – Bureau of Internal Revenue.

BSP – Bangko Sentral Ng Pilipinas.

CDA – Cooperative Development Authority.

Consulting Services – Refer to services for Infrastructure Projects and other types of projects or activities of the GOP requiring adequate external technical and professional expertise that are beyond the capability and/or capacity of the GOP to undertake such as, but not limited to: (i) advisory and review services; (ii) pre-investment or feasibility studies; (iii) design; (iv) construction supervision; (v) management and related services; and (vi) other technical services or special studies. (2016 revised IRR, Section 5(j))

Contract – Refers to the agreement entered into between the Procuring Entity and the Supplier or Manufacturer or Distributor or Service Provider for procurement of Goods and Services; Contractor for Procurement of Infrastructure Projects; or Consultant or Consulting Firm for Procurement of Consulting Services; as the case may be, as recorded in the Contract Form signed by the parties, including all attachments and appendices thereto and all documents incorporated by reference therein.

Contractor – Is a natural or juridical entity whose proposal was accepted by the Procuring Entity and to whom the Contract to execute the Work was awarded. Contractor as used in these Bidding Documents may likewise refer to a supplier, distributor, manufacturer, or consultant.

CPI – Consumer Price Index.

DOLE – Department of Labor and Employment.

DTI – Department of Trade and Industry.

Foreign-funded Procurement or Foreign-Assisted Project – Refers to procurement whose funding source is from a foreign government, foreign or international financing institution as specified in the Treaty or International or Executive Agreement. (2016 revised IRR, Section 5[b]).

GFI – Government Financial Institution.

GOCC – Government-owned and/or –controlled corporation.

Goods – Refer to all items, supplies, materials and general support services, except Consulting Services and Infrastructure Projects, which may be needed in the transaction of public businesses or in the pursuit of any government undertaking, project or activity, whether in the nature of equipment, furniture, stationery, materials for construction, or personal property of any kind, including non-personal or contractual services such as the repair and maintenance of equipment and furniture, as well as trucking, hauling, janitorial, security, and related or analogous services, as well as procurement of materials and supplies provided by the Procuring Entity for such services. The term "related" or "analogous services" shall include, but is not limited to, lease or purchase of office space; media advertisements, health maintenance services, and other services essential to the operation of the Procuring Entity. (2016 revised IRR, Section 5[r])

GOP – Government of the Philippines.

Infrastructure Projects – Include the construction, improvement, rehabilitation, demolition, repair, restoration or maintenance of roads and bridges, railways, airports, seaports, communication facilities, civil works components of information technology projects, irrigation, flood control and drainage, water supply, sanitation, sewerage and solid waste management systems, shore protection, energy/power and electrification facilities, national buildings, school buildings, hospital buildings, and other related construction projects of the government. Also referred to as *civil works* or *works*. (2016 revised IRR, Section 5[u])

LGUs – Local Government Units.

NFCC – Net Financial Contracting Capacity.

NGA – National Government Agency.

PCAB – Philippine Contractors Accreditation Board.

PhilGEPS – Philippine Government Electronic Procurement System.

Procurement Project – refers to a specific or identified procurement covering goods, infrastructure project or consulting services. A Procurement Project shall be described, detailed, and scheduled in the Project Procurement Management Plan prepared by the agency which shall be consolidated in the procuring entity's Annual Procurement Plan. (GPPB Circular No. 06-2019 dated 17 July 2019)

PSA – Philippine Statistics Authority.

SEC – Securities and Exchange Commission.

SLCC – Single Largest Completed Contract.

UN – United Nations.

BID DOCUMENTS

SECTION I- INVITATION TO BID

NAME OF PROJECT: ASM CONSTRUCTION OF STANDBY DIESEL POWER
HOUSE SPILLWAY & INTAKE

PR NO./REF. NO.: MG-A7M25-126/INFRA2025-AQ6-Q29

Section I. Invitation to Bid



NATIONAL POWER CORPORATION

MinGen**Invitation to Bid for A6M CONSTRUCTION OF STANDBY DIESEL POWER
HOUSE SPILLWAY & INTAKE**

The NATIONAL POWER CORPORATION-MINDANAO GENERATION, through the approved Corporate Budget of NPC for CY 2025 intends to apply the sum of **Two Million Seven Hundred Ninety Two Thousand Five Hundred Seventy Eight & 17/100 Pesos (PHP2,792,578.17)** being the Approved Budget for the Contract (ABC) to payments under the contract for **A6M Construction of Standby Diesel Power House Spillway & Intake, Brgy. Ditucalan, Iligan City (PR No. MG-A7M25-126 / Ref. No. INFRA2025-AG6-029)**. Bids received in excess of the ABC shall be automatically rejected at bid opening.

1. The NATIONAL POWER CORPORATION-MINDANAO GENERATION now invites bids for the above Procurement Project. Completion of the Works is required **Eighty (80) calendar days**. Bidders should have completed a contract similar to the Project. The description of an eligible bidder is contained in the Bidding Documents, particularly, in Section II (Instructions to Bidders).
2. Bidding will be conducted through open competitive bidding procedures using non-discretionary "pass/fail" criterion as specified in the 2016 revised Implementing Rules and Regulations (IRR) of Republic Act (RA) No. 9184.
3. Interested bidders may obtain further information from BAC Secretariat, NATIONAL POWER CORPORATION-MINDANAO GENERATION and inspect the Bidding Documents at the address given below from 8:00 AM – 5:00 PM Monday to Friday.
4. A complete set of Bidding Documents may be acquired by interested Bidders on July 21-August 11, 2025 from the given address and website(s) below and upon payment of the applicable fee for the Bidding Documents, pursuant to the latest Guidelines issued by the GPPB, in the amount of **Five Thousand Pesos (PHP5,000.00)**. The Procuring Entity shall allow the bidder to pay online and present its proof of payment for the fees in person, by facsimile, or through electronic means. For those prospective bidders who wish to pay online, below are the details of the account:

Landbank Account name : NPC GENCO 5 COLLECTIONS FUND

Landbank Account number: 0321-1689-14

It may also be downloaded free of charge from the website of the Philippine Government Electronic Procurement System (PhilGEPS) provided that Bidders shall pay the applicable fee for the Bidding Documents not later than the submission of their bids.

5. The **NATIONAL POWER CORPORATION-MINDANAO GENERATION** will hold a Pre-Bid Conference on **July 29, 2025 at 9:00 AM** at *Bidding Room, NPC-Mindanao Generation Headquarters, Maria Cristina, Iligan City* and/or through videoconferencing/webcasting via ZOOM, which shall be open to prospective bidders. Interested online attendees are required to pre-register one (1) day before the scheduled pre-bidding conference. For pre-registration, contact tel. no. (063) 223-4604, 224-5452, 224-5551 & 224-5553 (local-2544) or email cmo_logistics_afd_mingen@napocor.gov.ph.
6. Bids must be duly received by the BAC Secretariat through manual submission at the office address as indicated below, on or before **August 11, 2025 at 9:30 AM**. Late bids shall not be accepted.
7. All bids must be accompanied by a bid security in any of the acceptable forms and in the amount stated in ITB Clause 15.
8. Bid opening shall be on **August 11, 2025 at 9:30 AM** at the *Bidding Room, NPC-Mindanao Generation Headquarters, Maria Cristina, Iligan City*. Bids will be opened in the presence of the bidders' representatives who choose to attend the activity.
9. This project requires submission of at least:
 - **Certificate of Site Inspection**

Note: Submission of bids shall be done manually

10. The **NATIONAL POWER CORPORATION- MINDANAO GENERATION** reserves the right to reject any and all bids, declare a failure of bidding, or not award the contract at any time prior to contract award in accordance with Sections 35.6 and 41 of the 2016 revised Implementing Rules and Regulations (IRR) of RA No. 9184, without thereby incurring any liability to the affected bidder or bidders.


SECTION I- INVITATION TO BID

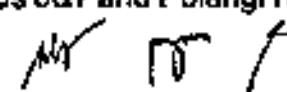
11. For further information, please refer to:

BAC Secretariat
Contracts Management Office
Logistics Division
Mindanao Generation Headquarters
National Power Corporation
Maria Cristina, Iligan City
cmo_logistics_afd_mingen@napocor.gov.ph
Tel. No.: 063) 223-4604, 224-5452, 224-5551 & 224-5553 (local-2544)
www.napocor.gov.ph

12. You may visit the following websites:

For downloading of Bidding Documents: <https://www.philgeps.gov.ph/> or
<https://www.napocor.gov.ph/BCSD/bids.php>



R. Y. CIRUELA
Chairman, Bids and Awards Committee
MinGen HQ, Agus 6&7 and Pulangi IV, HPPs


Date of PhilGEPS Publication: 21 July 2025

BID DOCUMENTS

SECTION II- INSTRUCTION TO BIDDERS

NAME OF PROJECT: ASM CONSTRUCTION OF STANDBY DIESEL POWER
HOUSE SPILLWAY & INTAKE

PR NO./REF. NO.: MG-A7M25-12B/INFRA2023-AGS-029

Section II. Instructions to Bidders

1. Scope of Bid

The Procuring Entity, **NATIONAL POWER CORPORATION-MINDANAO GENERATION** invites Bids for the **AGM Construction of Standby Diesel Power House Spillway & Intake, Brgy. Ditucalan, Iligan City, with Project Identification Number/PR No. MG-ATM25-126 /Ref. No. INFRA2025-AG6-029.**

The Procurement Project (referred to herein as "Project") is for the construction of Works, as described in Section VI (Specifications).

2. Funding Information

2.1. The GOP through the source of funding as indicated below for CY 2025 in the amount of **Four Million Six Hundred Thousand Pesos (PHP4,600,000.00)**

2.2. The source of funding is:

a. GOCC and GFIs, the approved Corporate Operating Budget.

3. Bidding Requirements

The Bidding for the Project shall be governed by all the provisions of RA No. 9184 and its 2016 revised IRR, including its Generic Procurement Manual and associated policies, rules and regulations as the primary source thereof, while the herein clauses shall serve as the secondary source thereof.

Any amendments made to the IRR and other GPPB Issuances shall be applicable only to the ongoing posting, advertisement, or invitation to bid by the BAC through the issuance of a supplemental or bid bulletin.

The Bidder, by the act of submitting its Bid, shall be deemed to have inspected the site, determined the general characteristics of the contracted Works and the conditions for this Project, such as the location and the nature of the work; (b) climatic conditions; (c) transportation facilities; (c) nature and condition of the terrain, geological conditions at the site communication facilities, requirements, location and availability of construction aggregates and other materials, labor, water, electric power and access roads; and (d) other factors that may affect the cost, duration and execution or implementation of the contract, project, or work and examine all instructions, forms, terms, and project requirements in the Bidding Documents.

4. Corrupt, Fraudulent, Collusive, Coercive, and Obstructive Practices

The Procuring Entity, as well as the Bidders and Contractors, shall observe the highest standard of ethics during the procurement and execution of the contract. They or through an agent shall not engage in corrupt, fraudulent, collusive, coercive, and obstructive practices defined under Annex "I" of the 2016 revised IRR of RA No. 9184 or other integrity violations in competing for the Project.

5. Eligible Bidders

5.1. Only Bids of Bidders found to be legally, technically, and financially capable will be evaluated.

5.2. The Bidder must have an experience of having completed a Single Largest Completed Contract (SLCC) that is similar to this Project, equivalent to at least fifty percent (50%) of the ABC adjusted, if necessary, by the Bidder to current prices using the PSA's CPI, except under conditions provided for in Section 23.4.2.4 of the 2016 revised IRR of RA No. 9184.

A contract is considered to be "similar" to the contract to be bid if it has the major categories of work stated in the BDS.

5.3. For Foreign-funded Procurement, the Procuring Entity and the foreign government/foreign or international financing institution may agree on another track record requirement, as specified in the Bidding Document prepared for this purpose.

5.4. The Bidders shall comply with the eligibility criteria under Section 23.4.2 of the 2016 IRR of RA No. 9184.

6. Origin of Associated Goods

There is no restriction on the origin of Goods other than those prohibited by a decision of the UN Security Council taken under Chapter VII of the Charter of the UN.

7. Subcontracts

7.1. The Bidder may subcontract portions of the Project to the extent allowed by the Procuring Entity as stated herein, but in no case more than fifty percent (50%) of the Project.

The Procuring Entity has prescribed that:

- a. Subcontracting is not allowed.

8. Pre-Bid Conference

The Procuring Entity will hold a pre-bid conference for this Project on the specified date and time and either at its physical address and/or through videoconferencing/webcasting as indicated in paragraph 6 of the IB.

9. Clarification and Amendment of Bidding Documents

Prospective bidders may request for clarification on and/or interpretation of any part of the Bidding Documents. Such requests must be in writing and received by the Procuring Entity, either at its given address or through electronic mail indicated in the IB, at least ten (10) calendar days before the deadline set for the submission and receipt of Bids.

10. Documents Comprising the Bid: Eligibility and Technical Components

10.1. The first envelope shall contain the eligibility and technical documents of the Bid as specified in Section IX. Checklist of Technical and Financial Documents.

10.2. If the eligibility requirements or statements, the bids, and all other documents for submission to the BAC are in foreign language other than English, it must be accompanied by a translation in English, which shall be authenticated by the appropriate Philippine foreign service establishment, post, or the equivalent office having jurisdiction over the foreign bidder's affairs in the Philippines. For Contracting Parties to the Apostille Convention, only the translated documents shall be authenticated through an apostille pursuant to GPPB Resolution No. 13-2019 dated 23 May 2019. The English translation shall govern, for purposes of interpretation of the bid.

10.3. A valid PCAB License is required, and in case of joint ventures, a valid special PCAB License, and registration for the type and cost of the contract for this Project. Any additional type of Contractor license or permit shall be indicated in the BDS.

10.4. A List of Contractor's key personnel (e.g., Project Manager, Project Engineers, Materials Engineers, and Foremen) assigned to the contract to be bid, with their complete qualification and experience data shall be provided. These key personnel must meet the required minimum years of experience set in the BDS.

10.5. A List of Contractor's major equipment units, which are owned, leased, and/or under purchase agreements, supported by proof of ownership, certification of availability of equipment from the equipment

lessor/vendor for the duration of the project, as the case may be, must meet the minimum requirements for the contract set in the BDS.

11. Documents Comprising the Bid: Financial Component

- 11.1. The second bid envelope shall contain the financial documents for the Bid as specified in Section IX. Checklist of Technical and Financial Documents.
- 11.2. Any bid exceeding the ABC indicated in paragraph 1 of the IB shall not be accepted.
- 11.3. For Foreign-funded procurement, a ceiling may be applied to bid prices provided the conditions are met under Section 31.2 of the 2016 revised IRR of RA No. 9184.

12. Alternative Bids

Bidders shall submit offers that comply with the requirements of the Bidding Documents, including the basic technical design as indicated in the drawings and specifications. Unless there is a value engineering clause in the BDS, alternative Bids shall not be accepted.

13. Bid Prices

All bid prices for the given scope of work in the Project as awarded shall be considered as fixed prices, and therefore not subject to price escalation during contract implementation, except under extraordinary circumstances as determined by the NEDA and approved by the GPPB pursuant to the revised Guidelines for Contract Price Escalation guidelines.

14. Bid and Payment Currencies

- 14.1. Bid prices may be quoted in the local currency or tradable currency accepted by the BSP at the discretion of the Bidder. However, for purposes of bid evaluation, Bids denominated in foreign currencies shall be converted to Philippine currency based on the exchange rate as published in the BSP reference rate bulletin on the day of the bid opening.

- 14.2. *Payment of the contract price shall be made in:*

- a. Philippine Pesos.

15. Bid Security

15.1. The Bidder shall submit a Bid Securing Declaration or any form of Bid Security in the amount indicated in the BDS, which shall be not less than the percentage of the ABC in accordance with the schedule in the BDS.

15.2. The Bid and bid security shall be valid until *One Hundred Twenty (120) Calendar Days from the Scheduled Bid Opening*. Any bid not accompanied by an acceptable bid security shall be rejected by the Procuring Entity as non-responsive.

16. Sealing and Marking of Bids

Each Bidder shall submit one copy of the first and second components of its Bid.

The Procuring Entity may request additional hard copies and/or electronic copies of the Bid. However, failure of the Bidders to comply with the said request shall not be a ground for disqualification.

If the Procuring Entity allows the submission of bids through online submission to the given website or any other electronic means, the Bidder shall submit an electronic copy of its Bid, which must be digitally signed. An electronic copy that cannot be opened or is corrupted shall be considered non-responsive and, thus, automatically disqualified.

17. Deadline for Submission of Bids

The Bidders shall submit on the specified date and time and either at its physical address or through online submission as indicated in paragraph 7 of the IB.

18. Opening and Preliminary Examination of Bids

18.1. The BAC shall open the Bids in public at the time, on the date, and at the place specified in paragraph 9 of the IB. The Bidders' representatives who are present shall sign a register evidencing their attendance. In case videoconferencing, webcasting or other similar technologies will be used, attendance of participants shall likewise be recorded by the BAC Secretariat.

In case the Bids cannot be opened as scheduled due to justifiable reasons, the rescheduling requirements under Section 29 of the 2016 revised IRR of RA No. 9184 shall prevail.

18.2. The preliminary examination of Bids shall be governed by Section 30 of the 2016 revised IRR of RA No. 9184.

19. Detailed Evaluation and Comparison of Bids

- 19.1. The Procuring Entity's BAC shall immediately conduct a detailed evaluation of all Bids rated "passed" using non-discretionary pass/fail criteria. The BAC shall consider the conditions in the evaluation of Bids under Section 32.2 of 2016 revised IRR of RA No. 9184.
- 19.2. If the Project allows partial bids, all Bids and combinations of Bids as indicated in the BDS shall be received by the same deadline and opened and evaluated simultaneously so as to determine the Bid or combination of Bids offering the lowest calculated cost to the Procuring Entity. Bid Security as required by ITB Clause 16 shall be submitted for each contract (lot) separately.
- 19.3. In all cases, the NFCC computation pursuant to Section 23.4.2.6 of the 2016 revised IRR of RA No. 9184 must be sufficient for the total of the ABCs for all the lots participated in by the prospective Bidder.

20. Post Qualification

Within a non-extendible period of five (5) calendar days from receipt by the Bidder of the notice from the BAC that it submitted the Lowest Calculated Bid, the Bidder shall submit its latest income and business tax returns filed and paid through the BIR Electronic Filing and Payment System (eFPS), and other appropriate licenses and permits required by law and stated in the BDS.

21. Signing of the Contract

The documents required in Section 37.2 of the 2016 revised IRR of RA No. 9184 shall form part of the Contract. Additional Contract documents are indicated in the BDS.

Section III. Bid Data Sheet

Bid Data Sheet

ITB Clause			
5.2	For this purpose, contracts similar to the Project refer to contracts which have the same major categories of work, which shall be: Construction/Rehabilitation of Vertical Structures		
7.1	Subcontracting is not allowed.		
10.3	None		
10.4	The key personnel must meet the required minimum years of experience set below:		
	<u>Key Personnel</u>	<u>General Expertise</u>	<u>Relevant Experience</u>
	1 – Project Engineer	Licensed Civil Engineer	At least five (5) years' experience in related works
	1 - Construction Foreman	B.S. Civil Engineering Graduate Civil Engineering Technology Graduate Non-graduate	At least three (3) years' experience in similar works At least five (5) years' experience in similar works At least five (5) years working experience as Construction Foreman in similar works
	1 - Construction Safety and Health Officer (SO2)	Construction Safety Officer 2	At least forty (40) hours of Construction Safety and Health (COSH) Training from Occupational Safety and Health Center (OSHC) or Safety Training Organizations (STOs) accredited by the Department of Labor and Employment (DOLE). Must be present during the whole duration of the project). At least three

	<table><tr><td>1 – Welder</td><td>NC II Certified</td><td>(3) years experience as Safety Officer. NC II Certified with At least three (3) years experience in welding/cutting works.</td></tr><tr><td>1 – Electrician</td><td>NC II Certified</td><td>NC II Certified with At least three (3) years experience in electrical works</td></tr><tr><td>1 – Skilled Painter</td><td></td><td>At least three (3) years experience in painting works.</td></tr></table> <p><i>The following key personnel information indicated above must be included in Standard Form NPCMGNSF-INFR-05: List of Key personnel proposed to be assigned to the Contract. Filled up Standard Form NPCMGNSF-INFR-05 must be included in the technical component envelope.</i></p> <p>Project Engineer or Foreman and Construction Safety & Health Officer maybe one person, as long as he meets the requirements of the two positions. Provided however, that there is no overlapping of projects undertaken by the same contractor and supervised by the same person.</p> <p>The above key personnel must be either employed by the applicant or contracted by the applicant to be employed for the contract to be bid.</p>	1 – Welder	NC II Certified	(3) years experience as Safety Officer. NC II Certified with At least three (3) years experience in welding/cutting works.	1 – Electrician	NC II Certified	NC II Certified with At least three (3) years experience in electrical works	1 – Skilled Painter		At least three (3) years experience in painting works.											
1 – Welder	NC II Certified	(3) years experience as Safety Officer. NC II Certified with At least three (3) years experience in welding/cutting works.																			
1 – Electrician	NC II Certified	NC II Certified with At least three (3) years experience in electrical works																			
1 – Skilled Painter		At least three (3) years experience in painting works.																			
10.5	<p>The minimum equipment requirements are the following:</p> <table><tr><td><u>Equipment</u></td><td><u>Capacity</u></td><td><u>Number of Units/Assembly</u></td></tr><tr><td>Bagger Mixer</td><td>One-bagger</td><td>One (1)</td></tr><tr><td>Concrete Vibrator</td><td>5 HP</td><td>One (1)</td></tr><tr><td>Hydraulic Rock Splitter</td><td>Min. 200 Tons splitting force</td><td>One (1)</td></tr><tr><td>Backhoe</td><td>0.80 cu.m.</td><td>One (1)</td></tr><tr><td>Welding Machine</td><td>300 Amperes</td><td>One (1)</td></tr></table>			<u>Equipment</u>	<u>Capacity</u>	<u>Number of Units/Assembly</u>	Bagger Mixer	One-bagger	One (1)	Concrete Vibrator	5 HP	One (1)	Hydraulic Rock Splitter	Min. 200 Tons splitting force	One (1)	Backhoe	0.80 cu.m.	One (1)	Welding Machine	300 Amperes	One (1)
<u>Equipment</u>	<u>Capacity</u>	<u>Number of Units/Assembly</u>																			
Bagger Mixer	One-bagger	One (1)																			
Concrete Vibrator	5 HP	One (1)																			
Hydraulic Rock Splitter	Min. 200 Tons splitting force	One (1)																			
Backhoe	0.80 cu.m.	One (1)																			
Welding Machine	300 Amperes	One (1)																			
12	N/A																				
15.1	The bid security shall be in the form of a Bid Securing Declaration or any of the following forms and amounts:																				

	<p>a. The amount of not less than Fifty Five Thousand Eight Hundred Fifty One & 56/100 Pesos Only (PHP55,851.56) (2% of ABC), if bid security is in cash, cashier's/manager's check, bank draft/guarantee or irrevocable letter of credit;</p> <p>b. The amount of not less than One Hundred Thirty Nine Thousand Six Hundred Twenty Eight & 91/100 Pesos (PHP139,628.91) (5% of ABC), if bid security is in Surety Bond.</p>
19.2	Partial bids are not allowed.
20	<p>Additional documents to be submitted during post-qualification:</p> <ol style="list-style-type: none"> Other appropriate licenses and permits required by law and stated in the Bidding documents. <ol style="list-style-type: none"> Original Bank Statement year ending prior to bid opening; Valid and updated PhilGEPS Registration (Platinum Membership) (all pages); Registration Certificate from Securities and Exchange Commission (SEC), Department of Trade and Industry (DTI) for sole proprietorship, or Cooperative Development Authority (CDA) for cooperatives or its equivalent document; Mayor's or Business permit issued by the city or municipality where the principal place of business of the prospective bidder is located, or the equivalent document for Exclusive Economic Zones or Areas; Valid Tax clearance per E.O. No. 398, s. 2005, as finally reviewed and approved by the Bureau of Internal Revenue (BIR). Quarterly Income Tax Returns filed and paid through the BIR Electronic Filing and Payment System (eFPS); The prospective bidder's audited financial statements, showing, among others, the prospective bidder's total and current assets and liabilities, stamped "received" by the BIR or its duly accredited and authorized institutions, for the preceding calendar year which should not be earlier than two (2) years from the date of bid submission; Philippine Contractors Accreditation Board (PCAB) License; Board of Accountancy (BOA) Certificate; Contract and/or Notice of Award as supporting documents for NPC MinGen Form No. NPCMGNSF-INFR-01, if applicable; (a) Valid Professional Regulation Commission (PRC) license for professional personnel; (b) Certificate of Training with accreditation from DOLE for the Construction Safety & Health Officer and (c) Diploma and/or Service Record/Certificate of Employment of previous and/or current employer for Construction Foreman; National Certificate II and Certificate of Employment of previous and/or current employer for other skilled workers

	<p><i>required in the project - as supporting documents for NPC MinGen Form No. NPCMGNSF-INFR-05, if applicable.</i></p> <p><i>4. Certificate of good performance and/or Statement of Work Accomplishment showing Target and Actual Accomplishments Issued by the End-user/Implementing Agency of the ongoing projects listed in NPC MinGen Form No. NPCMGNSF-INFR-05, if applicable</i></p> <p><i>5. Certificate of Site Inspection issued by Department Manager or his authorized representative.</i></p> <p><i>6. Unamended product brochure/literature of the following materials:</i></p> <ul style="list-style-type: none"> • None
21	<p>Additional contract documents relevant to the Project that may be required by existing laws and/or the Procuring Entity, <u>prior to contract signing</u>, such as:</p> <ul style="list-style-type: none"> a) Approved construction schedule and S-curve b) Approved manpower schedule c) Construction methods d) Approved equipment utilization schedule e) Construction safety and health program approved by the DOLE f) Approved Project Evaluation Review Technique/Critical Path Method (PERT/CPM)

Section IV. General Conditions of Contract

1. Scope of Contract

This Contract shall include all such items, although not specifically mentioned, that can be reasonably inferred as being required for its completion as if such items were expressly mentioned herein. All the provisions of RA No. 9184 and its 2016 revised IRR, including the Generic Procurement Manual, and associated issuances, constitute the primary source for the terms and conditions of the Contract, and thus, applicable in contract implementation. Herein clauses shall serve as the secondary source for the terms and conditions of the Contract.

This is without prejudice to Sections 74.1 and 74.2 of the 2016 revised IRR of RA No. 9184 allowing the GPPB to amend the IRR, which shall be applied to all procurement activities, the advertisement, posting, or invitation of which were issued after the effectivity of the said amendment.

2. Sectional Completion of Works

If sectional completion is specified in the Special Conditions of Contract (SCC), references in the Conditions of Contract to the Works, the Completion Date, and the Intended Completion Date shall apply to any Section of the Works (other than references to the Completion Date and Intended Completion Date for the whole of the Works).

3. Possession of Site

- 4.1. The Procuring Entity shall give possession of all or parts of the Site to the Contractor based on the schedule of delivery indicated in the SCC, which corresponds to the execution of the Works. If the Contractor suffers delay or incurs cost from failure on the part of the Procuring Entity to give possession in accordance with the terms of this clause, the Procuring Entity's Representative shall give the Contractor a Contract Time Extension and certify such sum as fair to cover the cost incurred, which sum shall be paid by Procuring Entity.
- 4.2. If possession of a portion is not given by the above date, the Procuring Entity will be deemed to have delayed the start of the relevant activities. The resulting adjustments in contract time to address such delay may be addressed through contract extension provided under Annex "E" of the 2016 revised IRR of RA No. 9184.

4. The Contractor's Obligations

The Contractor shall employ the key personnel named in the Schedule of Key Personnel indicating their designation, in accordance with ITB Clause 10.3 and specified in the BDS, to carry out the supervision of the Works.

The Procuring Entity will approve any proposed replacement of key personnel only if their relevant qualifications and abilities are equal to or better than those of the personnel listed in the Schedule.

5. Performance Security

- 5.1. Within ten (10) calendar days from receipt of the Notice of Award from the Procuring Entity but in no case later than the signing of the contract by both parties, the successful Bidder shall furnish the performance security in any of the forms prescribed in Section 39 of the 2016 revised IRR.
- 5.2. The Contractor, by entering into the Contract with the Procuring Entity, acknowledges the right of the Procuring Entity to institute action pursuant to RA No. 3688 against any subcontractor be they an individual, firm, partnership, corporation, or association supplying the Contractor with labor, materials and/or equipment for the performance of this Contract.

6. Site Investigation Reports

The Contractor, in preparing the Bid, shall rely on any Site Investigation Reports referred to in the SCC supplemented by any information obtained by the Contractor.

7. Warranty

- 7.1. In case the Contractor fails to undertake the repair works under Section 62.2.2 of the 2016 revised IRR, the Procuring Entity shall forfeit its performance security, subject its property(ies) to attachment or garnishment proceedings, and perpetually disqualify it from participating in any public bidding. All payables of the GOP in his favor shall be offset to recover the costs.
- 7.2. The warranty against Structural Defects/Failures, except that occasioned-on force majeure, shall cover the period from the date of issuance of the Certificate of Final Acceptance by the Procuring Entity. Specific duration of the warranty is found in the SCC.

8. Liability of the Contractor

Subject to additional provisions, if any, set forth in the SCC, the Contractor's liability under this Contract shall be as provided by the laws of the Republic of the Philippines.

If the Contractor is a joint venture, all partners to the joint venture shall be jointly and severally liable to the Procuring Entity.

9. Termination for Other Causes

Contract termination shall be initiated in case it is determined *prima facie* by the Procuring Entity that the Contractor has engaged, before, or during the implementation of the contract, in unlawful deeds and behaviors relative to contract acquisition and implementation, such as, but not limited to corrupt, fraudulent, collusive, coercive, and obstructive practices as stated in ITB Clause 4.

10. Day works

Subject to the guidelines on Variation Order in Annex "E" of the 2016 revised IRR of RA No. 9184, and if applicable as indicated in the SCC, the Day works rates in the Contractor's Bid shall be used for small additional amounts of work only when the Procuring Entity's Representative has given written instructions in advance for additional work to be paid for in that way.

11. Program of Work

- 11.1. The Contractor shall submit to the Procuring Entity's Representative for approval the said Program of Work showing the general methods, arrangements, order, and timing for all the activities in the Works. The submissions of the Program of Work are indicated in the SCC.
- 11.2. The Contractor shall submit to the Procuring Entity's Representative for approval an updated Program of Work at intervals no longer than the period stated in the SCC. If the Contractor does not submit an updated Program of Work within this period, the Procuring Entity's Representative may withhold the amount stated in the SCC from the next payment certificate and continue to withhold this amount until the next payment after the date on which the overdue Program of Work has been submitted.

12. Instructions, Inspections and Audits

The Contractor shall permit the GOP or the Procuring Entity to inspect the Contractor's accounts and records relating to the performance of the Contractor and to have them audited by auditors of the GOP or the Procuring Entity, as may be required.

13. Advance Payment

The Procuring Entity shall, upon a written request of the Contractor which shall be submitted as a Contract document, make an advance payment to the Contractor in an amount not exceeding fifteen percent (15%) of the total contract price, to be made in lump sum, or at the most two installments according to a schedule specified in the SCC, subject to the requirements in Annex "E" of the 2016 revised IRR of RA No. 9184.

14. Progress Payments

The Contractor may submit a request for payment for Work accomplished. Such requests for payment shall be verified and certified by the Procuring Entity's Representative/Project Engineer. Except as otherwise stipulated in the SCC, materials and equipment delivered on the site but not completely put in place shall not be included for payment.

15. Operating and Maintenance Manuals

- 15.1. If required, the Contractor will provide "as built" Drawings and/or operating and maintenance manuals as specified in the SCC.
- 15.2. If the Contractor does not provide the Drawings and/or manuals by the dates stated above, or they do not receive the Procuring Entity's Representative's approval, the Procuring Entity's Representative may withhold the amount stated in the SCC from payments due to the Contractor.

Section V. Special Conditions of Contract

Special Conditions of Contract

GCC Clause	
2	Sectional completion is not specified.
4.1	The Procuring Entity shall give possession of the Site to the Contractor <i>on the start date</i> .
6	The site investigation reports are: NONE
7.2	Fifteen (15) years
10	Day works are not applicable to the contract.
11.1	The Contractor shall submit the Program of Work to the Procuring Entity's Representative <u>upon contract signing</u> or within <u>three (3)</u> days of delivery of the Notice of Award.
11.2	The amount to be withheld for late submission of an updated Program of Work is Fifty (50) % of the billed amount. The updating of Program of Work shall be done bi-monthly.
13	The amount of the advance payment is 15% of contract amount and paid in lump sum.
14	No further instruction.
15.1	The date by which operating and maintenance manuals are required is upon completion of the project. The date by which "as built" drawings are required is upon completion of the project.
15.2	The amount to be withheld for failing to produce "as built" drawings and/or operating and maintenance manuals by the date required is one hundred percent (100%) of the final billing.

Section VI. Specifications

Section VI. Technical Specifications**PH - PROJECT HIGHLIGHTS****PH 1.0 GENERAL**

The project is funded by NPC Mindanao Generation as part of its corporate social responsibility and is aimed to enhance corporate image in the pursuit of NPC mission and vision.

The Contractor shall furnish all labor, materials, equipment/tools and other incidental matters necessary to complete the works in accordance with the contracts and approved detailed engineering activities; and other existing laws, rules and regulations relative thereto.

PH 2.0 PROJECT LOCATION

The project is located at Agus 6 Spillway, Brgy. Ditucalan, Iligan City.

PH 3.0 SCOPE OF WORKS

The works and services to be performed by the Contractor for this undertaking shall essentially consist of, but not limited to the Construction of Standby Diesel Power House Spillway & Intake at Agus 6 Spillway Brgy. Ditucalan, Iligan City with the following scope of works:

1. Mobilization
2. Construction Safety & Health Program
3. Materials and Strength Testing
4. Earthworks
 - a. Excavation
 - b. Backfilling (used excavated materials for earthfill)
5. Concrete Works
6. Reinforcement DSB Works
7. Roofing Works
8. Masonry Works
 - a. Laying of CHB
 - b. Plastering
9. Steel Works
10. Ceiling Works
11. Door, Rollup & Cabinet Works

- 12. Electrical Works
- 13. Painting Works
- 14. Oil Water Separator
- 15. Demobilization

PH 4.0 CONTRACT PERIOD

The contractor shall complete the works as specified in Clause 3 within Eighty (80) calendar days. The total contract duration is inclusive of six (6) unworkable days considered unfavorable for the execution of work at site. The contract period shall be reckoned from the date of contract effectivity as specified in the Notice to Proceed.

PH 5.0 CONTRACTOR'S CLASSIFICATION

The Contractor must have a valid Philippine Contractors Accreditation Board (PCAB) license of at least Category C or D General Building with inter-agency classification and registration of at least Small B - Building or Industrial Plant.

TECHNICAL SPECIFICATIONS**CW - CIVIL WORKS****CW-1.0 GENERAL CONSTRUCTION FACILITIES****Scope**

This section covers the Construction of Standby Diesel Power House Spillway and Intake and other appurtenant structures, moving-in of the Contractor's construction equipment, setting up of the Contractor's various facilities at the end of the Contract.

Moving-In

The Contractor shall bring to the site all his necessary construction equipment and plant and install all stationary construction equipment and plant at location and in the manner approved by NPC. The Contractor shall submit sufficient detailed plans showing the proposed location of such stationary equipment and plant and other pertinent data. No installation of such stationary equipment shall be undertaken unless the corresponding plans have been approved by NPC.

Contractor's Camp Facilities

The Contractor shall construct and maintain the service roads, and related work that may be necessary, to the various work area, and other areas such as access to the camps, stores, plants, disposal areas and other facilities related to the work.

The Contractor shall provide and grade his camp site, construct his camp, employee housing, warehouse, machines and repair shops, fuel storage tanks and provide such related facilities and sanitary conveniences that the Contractor deems necessary for maintaining health, peace and order in the camp and work areas. The areas that may be used by the Contractor within the plant site shall be designated by NPC.

The Contractor shall provide, maintain, and operate, under competent direction, such camps and facilities as are necessary for the housing, feeding and accommodation of his employees.

Water Supply

The Contractor shall, at his own expense, be responsible for the supply, installation, operation and maintenance of a safe and adequate supply of drinking and domestic water. Whenever there is a possibility of contamination of the water supply for drinking and domestic purposes, chlorination or some other approved methods of sterilization shall be carried out. The installation and maintenance of these services shall be subject to the approval NPC.

Sewerage Disposal and Sanitation

The Contractor shall, at his own expense, be responsible for the installation, operation and maintenance of an adequate sewerage disposal and sanitation system and shall provide adequate toilet and wash-up facilities for his employees at his camp and in the areas where work is being carried out. The Contractor shall execute the work with due regard to adequate sanitary provisions and applicable codes and shall take all necessary steps to prevent the pollution of water in any spring, river, or other sources of water supply. All toilets or wash-up facilities shall be subject to the prior and continuing approval of NPC.

Fire Protection

The Contractor shall observe all necessary precautions against fire shall provide and maintain at his own expense, portable firefighting equipment he may deem necessary, and shall comply with all applicable laws of the Philippines relating thereto.

In the event of an uncontrollable fire occurring in the area of the Contractor's operation, the Contractor shall have to extinguish the fire immediately at his own expense, to the full extent of the manpower and equipment employed under the contract at the time of the fire.

SECTION VI- SPECIFICATIONS

The Contractor shall indemnify NPC against all liabilities, claims, damages and/or lawsuits arising thereto.

Construction Power

The Contractor shall be responsible for providing his own electric power supply required for construction and erection/installation. If power is available from NPC and should the contractor elect to utilise the NPC's power supply, he shall make an arrangement with NPC concerned group as to the billing rates and other requirements needed for direct connection to NPC.

Camp Security

The Contractor shall provide his own security force to the extent that he deems necessary for maintaining peace and order in the camp and work areas and to safeguard materials and equipment. Nothing under the provisions of this paragraph shall relieve the Contractor from full responsibility for the maintenance of peace and order and protection of life and property in all areas where he operates.

Construction Material Storage

The Contractor is required to put up cement warehouse (s) with capacities sufficient to store construction materials required in the work. The warehouse (s) shall be specifically for this contract notwithstanding his other facilities in the site that may serve the purpose.

Removal of Camp and Construction Facilities

After the completion of the work covered by the contract and prior to acceptance of the completed work, the entire camp facilities of the Contractor, including its water supply systems, electric distribution system, quarters, warehouses, shops, dining halls, commissaries, temporary shed and other facilities therein shall be removed by the Contractor. The site shall be cleared and cleaned as directed by NPC.

CW 1.2 MATERIALS**CW 1.3 WORKMANSHIP**

The Contractor shall bring to the site all his necessary construction equipment and plant and install all stationary construction equipment and plant at location and in the manner approved by NPC. The Contractor shall submit sufficient detailed plans showing the proposed location of such stationary equipment and plant and other pertinent data.

The Contractor shall provide and grade his camp site, construct his camp, employee housing, warehouse and provide such related facilities and sanitary conveniences that the Contractor deems necessary for maintaining health, peace and order in the camp and work areas. The areas that may be used by the Contractor within the construction site shall be designated by NPC.

CW 1.4 MEASUREMENT AND PAYMENT

Work prescribed herein shall not be measured and paid separately; same shall be deemed to be included in pay items for other items for work.

CW-2.0 CONSTRUCTION SAFETY & HEALTH PROGRAM

Scope

This section pertains to the environment and safety provisions, requirements and conditions that shall govern during the execution of all civil works under this project.

General Conditions

The Contractor shall ensure compliance with the applicable environmental and safety regulations, as well as ECC conditions, during installation/construction of this project through the implementation of measures that include, but not limited to the following:

- a. Designate a Safety Officer and a Pollution Control Officer who shall respectively handle all safety and environmental concerns of the project.
- b. Prepare and submit Construction Safety Health Plan (CSHP)
- c. Properly manage debris and various waste generated during installation/construction, such as the following:
 - Dispose of demolition and construction debris in a designated or NPC approved disposal area(s);
 - Stockpile (and cover if possible) or haul to the designated and/or pre developed dump sites that shall be provided with suitable drainage-

SECTION VI- SPECIFICATIONS

- equipped with sediments traps, stripped top soil, spoils from quarry/borrow sites and excavated materials
- Segregate solid wastes, such as empty cement sacks, scraps of tin or wood, used wires and other domestic garbage for recycling or storage in NPC-approved temporary storage areas and further disposal to LGU-designated disposal sites.
 - Properly handle, store and dispose off, through DENR-accredited transporter/treater, hazardous waste i.e. used oils, paints, thinner and etc.
- d. Limit construction activities that generate excessive, grading and excavation during dry weather.
- e. As far as practicable, undertake site stripping, grading and excavation during dry weather.
- f. Construction/Installation shall be carried out in a manner where landslides and erosions are minimized.
- g. Avoid unnecessary opening/clearing of areas outside construction sites or destruction of vegetable cover especially cutting of existing trees; and to re-vegetate disturbed areas.
- h. Spray water, whenever and wherever necessary, to minimize dust generation.
- i. Provide PPE's and other safety provisions required by DOLE, for its project/site works.

Measurement and Payment

Measurement and payment shall be made at the contract unit price or lot price as specified in the Bid Price Schedule. Payment shall include all cost in furnishing labor, materials, tool equipment and other incidentals necessary for the satisfactory completion of the project.

CW 3.0 MATERIAL TESTING**1. SAMPLING AND TESTING OF CONCRETE**

The Contractor shall furnish all materials, either separately or mixed, as required by NPC. Selection of materials and the making of test specimens shall be made under the supervision of NPC and delivered to NPC laboratory or any NPC accredited testing center at the Contractor's expense.

The expense of making and curing all concrete specimens including the materials comprising the concrete specimens shall be borne by the

SECTION VI- SPECIFICATIONS

Contractor. The cost of shipping and testing the concrete shall likewise be at the expense of the Contractor.

No concreting work on the project will be permitted to be done until NPC signifies in writing that, following the performance of the necessary tests, he gives his approval to the use of all materials involve in making the concrete.

Test cylinders shall be prepared from the concrete samples and tested. At least one set of (4) four cylinder samples shall be made for each major structural member. Two (2) cylinders shall be tested at 28 days for specification compliance and one shall be tested at 7 and 14 days respectively for information. The acceptance test result shall be the average of the strength of the two cylinders tested for 28 days.

The compressive strength of the concrete shall be deemed acceptable if the average of the three consecutive strength test results is equal to or exceeds the specified strength and no individual test falls below the specified strength by more than 3.50 MPa.

Concrete deemed to be not acceptable using the above criteria maybe rejected unless the Contractor can provide evidence, by means of core tests, that the quality of concrete represented by the failed test result is acceptable in place. Three (3) cores shall be taken in accordance with ASTM C42 and soaked for 24 hours prior to testing. Concrete in the area represented by the cores will be deemed acceptable if the average strength of the cores is equal to at least 85% of and no single core is less than 75% of the specified strength.

2. PHILIPPINE NATIONAL STANDARD (PNS) AND IMPORT COMMODITY CLEARANCE FOR CONSTRUCTION MATERIALS

A. All construction materials to be used in the project that are purchased locally shall pass the following PNS and/or ICC standard:

2. Cement

- **PNS 07:2017 – Portland Cement**

- Includes types: Type I (general use), Type II (moderate sulfate resistance), etc.

3. Reinforcing Steel Bars (Rebars)

- **PNS 49:2020 – Steel bars for concrete reinforcement**

- Grades: 275, 415, and 500 MPa.

4. Concrete Hollow Blocks (CHB)

- **PNS 26:2019 – Concrete masonry units – Load-bearing concrete hollow blocks – Specification**

- Class A; 800 psi
- Class B; 700 psi
- Class C; 350 psi

5. Aggregates (Sand and Gravel)

- **PNS ASTM C33 / C33M – Standard Specification for Concrete Aggregates**

6. Ready-Mixed Concrete

- **PNS ASTM C94 / C94M – Standard Specification for Ready-Mixed Concrete**

7. Structural Steel

- **PNS 657:2020 – Hot-rolled structural steel sections**
 - Includes I-beams, H-beams, angles, channels.

8. Lumber and Wood Products

- **PNS 193:2020**

9. Fire-Resistant Construction Materials

- **PNS ISO 834 – Fire-resistance tests**

10. Galvanized Iron Pipe

- **PNS 26:1992**

11. Electrical Wires

- **PNS 260:2002 – Annealed Copper Wires**
- **PNS 35:2013 – PVC Insulated Copper Wires and Cables (Rated Voltage 600V)**
- **PNS UL Standards for Wire and Cable**

Notable Standards:

- PNS UL 66:2023 – Fixture Wire.
- PNS UL 83A:2023 – Fluoropolymer Insulated Wire.
- PNS UL 854:2023 – Service-Entrance Cables.
- PNS UL 1650:2023 – Portable Power Cable.
- PNS UL 444:2023 – Communications Cables

12. Sanitary Pipes and Fixtures

- PNS 1950:2003 – PVC-U Sanitary Pipes

15.3. PNS 156:2010 – Sanitary Wares

12. Lighting Fixtures

- PNS IEC 1328:1992 – Luminaires: Part 1 – General Requirements and Tests
- PNS IEC 62560:2012 – Self-Ballasted LED Lamps for General Lighting Services
- PNS 2050-5:2006 – Lamps and Related Equipment: Energy Labeling Requirements – Part 5: Luminaires

B. All construction materials to be used in the project that are purchased abroad shall pass the ICC standard. All materials shall have an ICC mark to guarantee that the product has undergone inspection and testing to verify its compliance with the relevant PNS. This certification helps protect NPC as consumer from substandard and potentially hazardous construction materials

- 1. Cement and Blended Hydraulic Cement: Must comply with PNS ASTM C150:2019 and PNS ASTM C595:2019 standards.**
- 2. Steel Products: Including deformed and non-deformed bars, which must adhere to PNS ASTM A615:2019 and PNS ASTM A706:2019 standards.**
- 3. Ceramic Tiles: Must meet PNS ISO 13006:2018 standards.**
- 4. Galvanized Iron Sheets: Should comply with PNS ASTM A653/A653M:2019 standards.**
- 5. PVC Pipes and Fittings: Must conform to PNS ISO 4422:2018 standards.**
- 6. Sanitary Wares: Including water closets, lavatories, and bidets, which should meet PNS 156:2010 standards**

All other construction materials that are not listed and are purchased abroad shall have ICC certification to ensure that imported construction materials meet

SECTION VI- SPECIFICATIONS

the required safety, quality, and performance standards set by the DTI-BPS. This protects consumers and ensures the integrity of construction projects.

Measurement and Payment

No separate measurement and payment will be made for the Materials and Strength and Testing. The entire cost thereof shall be included in the related pay items in the Bill of Quantities.

CW 4.0 EARTHWORKS**CW 4.1 EXCAVATION****CW 4.1.1 GENERAL SCOPE**

This item shall consist of excavation and the disposal of material in accordance with the Specification and in conformity with the lines, grades and dimensions shown on the Plans or established by the NPC Engineer.

CW 4.1.2 MATERIALS**CW 4.1.3 WORKMANSHIP**

All excavations shall be finished to reasonably smooth and uniform surfaces. No materials shall be wasted without authority of the NPC Engineer. Excavation operations shall be conducted so that material outside of the limits of slopes will not be disturbed.

All suitable materials removed from the excavation shall be used in the formation of the embankment, subgrade, shoulders, slopes, bedding, and backfill for structures, and for other purposes shown on the Plans or as directed.

Only approved materials shall be used in the construction of embankments and backfills.

All excess materials, including rock and boulders that cannot be used in embankments shall be disposed off as directed.

CW 4.1.4 MEASUREMENT AND PAYMENT

Unit of measure shall be the net volume in its original position.

The accepted quantities shall be paid for at the contract unit price included in the Bill of Quantities which price and payment shall be full compensation for the removal and disposal of excavated materials including all labor, equipment, tools, and incidentals necessary to complete the work prescribed in this item.

CW 4.2 BACKFILLING

CW 4.2.1 GENERAL SCOPE

This item shall consist of furnishing, placing and compacting boulders on top of existing soft seabed material encountered and found unsuitable for foundation of the wharf which shall be constructed in accordance with the Plans.

CW 4.2.2 MATERIALS

All rocks (Class I & II) to be used shall be hard durable, and not likely to disintegrate in seafake water. Rocks shall weigh not less than 1,900 kilograms per cubic meter (specific gravity – 1.9) or approximately 19.05 kilo Newton (kN) per cubic meter of solid materials. Rocks shall be angular. Sub-angular rocks may be used subject to the approval of the NPC Engineer. Rounded or well rounded rocks will not be accepted.

Concrete filler for the purpose of preventing escape of fill material, shall be class "B" concrete plus 10% additional cement.

CW 4.2.3 WORKMANSHIP

The larger pieces of facing rock (Class I & II) shall be laid carefully along the toe with allowance being made for possible settlement. These rows of large rocks shall be extended to maintain slightly in advance of the completed portion of work. The larger pieces of rock shall be placed on the outer slope of the concrete and they shall be laid so their longest dimension will be approximately normal to the plane of the face of the slope as indicated in the plans.

SECTION VI- SPECIFICATIONS

The work shall be done in skillful manner, which implies careful selection of rocks to fit properly together so that the finished surface shall be even and tight.

CW 4.2.4 MEASUREMENT AND PAYMENT

Backfilling will be measured by cubic meter (cu.m.). The quantity to be paid for shall be the design volume compacted in-place as shown on the Plans and accepted in the completed course.

The accepted quantities shall be paid for at the contract unit price for Backfilling which price and payment shall be full compensation for furnishings and placing all materials, including all labor, equipment, tools and Incidentals necessary to complete the work prescribed in this Item.

CW 5.0 CONCRETE WORKS

CW 5.1 GENERAL SCOPE

This item shall consist of furnishing, placing and finishing concrete in accordance with the specification and conforming to the lines, grades, and dimension shown on the plans.

CW 5.2 MATERIALS

CW 5.2.1 Portland Cement and Masonry Cement

Cement shall conform to the requirements of the following cited Specifications for the type specified or permitted.

Type	Specifications
Portland Cement	AASHTO M 85 (ASTM C 150)
Blended Hydraulic Cements	AASHTO M 240 (ASTM C 595)
Masonry Cement	AASHTO M 150 (ASTM C 91)

Only Type I Portland Cement shall be used unless otherwise provided for in the Special Provisions. Different brands or the same brands from different mills shall not be mixed nor shall they be used alternately unless the mix is approved by the Engineer.

The Contractor shall provide suitable means of storing and protecting the cement against dampness. Cement which, for any reason, has become

SECTION VI- SPECIFICATIONS

partially set or which contains lumps of caked cement will be rejected. Cement salvaged from discarded or used bags shall not be used.

The compressive strength of mortar samples tested at 7 days can be considered for acceptance of cement quality provided that the strength of the samples at 7 days is not less than 23.46 MPa which is 85% of the compressive strength requirement for 28 days (27.6 MPa) when tested in accordance with ASTM C 150.

CW 5.2.1 CONCRETE AGGREGATES**CW 5.2.1.1 Fine Aggregate**

It shall consist of natural sand, stone screenings or other inert materials with similar characteristics, or combinations thereof, having hard, strong and durable particles. Fine aggregate from different sources of supply shall not be mixed or stored in the same pile nor used alternately in the same class of concrete without the approval of the Engineer.

It shall not contain more than three (3) mass percent of material passing the 0.075 mm (No. 200 sieve) by washing nor more than one (1) mass percent each of clay lumps or shale. If the fine aggregate is subjected to five (5) cycles of the sodium sulfate soundness test, the weighted loss shall not exceed 10 mass percent. It shall be free from injurious amounts of organic impurities.

The fine aggregate shall be well-graded from coarse to fine and shall conform to the Grading Requirements listed below:

Grading Requirement for Fine Aggregate

Sieve Designation	Mass Percent Passing
9.5 mm (3/8 in)	100
4.75 mm (No. 4)	95 – 100
2.36 mm (No. 8)	-
1.18 mm (No. 16)	45 – 80
0.600 mm (No. 30)	-
0.300 mm (No. 50)	5 – 30
0.150 mm (No. 100)	0 – 10

CW 5.2.1.2 Coarse Aggregate

It shall consist of crushed stone, gravel, blast furnace slag, or other approved inert materials of similar characteristics, or combinations thereof, having hard, strong, durable pieces and free from any adherent coatings.

It shall contain not more than one (1) mass percent of material passing the 0.075 mm (No. 200) sieve, not more than 0.25 mass percent of clay lumps, nor more than 3.5 mass percent of soft fragments.

If the coarse aggregate is subjected to five (5) cycles of the sodium sulfate soundness test, the weighted loss shall not exceed 12 mass percent. It shall have a mass percent of wear not exceeding 40 when tested by AASHTO T 96.

Only one grading specification shall be used from any one source.

Grading Requirement for Coarse Aggregate

Sieve Designation		Mass Percent Passing		
Standard mm	Alternate U. S. Standard	Grading A	Grading B	Grading C
75.00	3 in.	100	-	-
63.00	2-1/2 in.	90-100	100	100
50.00	2 in.	-	90-100	95-100
37.5	1-1/2 in.	25-60	35-70	-
25.0	1 in.	-	0-15	35-70
19.0	3/4 in.	0-10	-	-
12.5	1/2 in.	0-5	0-5	10-30
4.75	No. 4	-	-	0-5

CW 5.2.1.2 Water

Water used in mixing, curing or other designated application shall be reasonably clean and free of oil, salt, acid, alkali, grass or other substances injurious to the finished product. Water will be tested in accordance with and shall meet the requirements of Item 714, Water. Water which is drinkable may be used without test. Where the source of water is shallow, the intake shall be so enclosed as to exclude silt, mud, grass or other foreign materials.

CW 5.3 WORKMANSHIP

The proportions of aggregate to cement for any concrete shall be such as to produce a mixture which will work readily into the corners and angles of the form and around reinforcement with the method of placing employed on the work, but without permitting the materials to segregate or excess free water to collect on the surface. The methods of measuring concrete materials shall be such that the proportions can be accurately controlled and easily checked at any time during the work.

The proportion of fine aggregate, coarse aggregate and cement to attain the required strength shall be 1:2:3, 1 part Cement in bag; 2 part Sand in bags; and 3 part Gravel in bags.

Water-cement ratios for strengths greater than that shown in Table below may be used provided that the relationship between strength and water-cement ratio for the materials to be used has been previously established by reliable test data and the resulting concrete satisfies the requirements of concrete quality.

MAXIMUM PERMISSIBLE WATER-CEMENT RATIOS FOR CONCRETE

Specified compressive strength at 28 days, psi	Maximum permissible water-cement ratio			
	Non air-entrained concrete		Air-entrained concrete	
	U.S. gal. per 42.6 kg. bag of cement	Absolute ratio by weight	U.S. gal. per 42.6 kg. bag of cement	Absolute ratio by weight
2500	7 1/4	0.642	6 1/4	0.554
3000	6 1/4	0.576	5 1/4	0.465
3500	5 1/4	0.510	4 1/4	0.399
4000	5	0.443	4	0.354

CW 5.4 MEASUREMENT AND PAYMENT

The quantity of concrete to be paid shall be the quantity shown in the Bid Schedule in cubic meter, unless changes in design are made in which case the quantity shown in the Bid Schedule will be adjusted by the amount of the change for the purpose of payment. No deduction will be made for the volume occupied by the pipe less than 101 mm (4") in diameter nor for reinforcing steel, anchors, or expansion materials.

The accepted quantities of structural concrete completed in place will be paid for at the contract unit price for cubic meter as indicated on the Bid Schedule. Such prices and payment shall be full compensation for furnishing all materials, including metal water stops, joints, joint fillers, weep holes, and rock backing and timber bumpers; for all form and false work; for mixing, placing, furnishing, and curing the concrete; and for all labor, materials, equipment, tools and incidentals necessary to complete the item.

CW 6.0 REINFORCEMENT DSB WORKS

CW 6.1 GENERAL SCOPE

This item shall consist of furnishing, bending, fabricating and placing of steel reinforcement of the type, size, shape and grade required in accordance with

SECTION VI- SPECIFICATIONS

this Specification and in conformity with the requirements shown on the Plans or as directed by the NPC Engineer.

CW 6.2 MATERIALS

Reinforcing steel shall conform when tested to the requirements of the following Specifications:

Deformed Billet-Steel Bars for Concrete Reinforcement	AASHTO M 31 (ASTM A 615/PNS 49)
Deformed Steel Wire for Concrete Reinforcement	AASHTO M 225 (ASTM A 496)
Welded Steel Wire Fabric for Concrete Reinforcement	AASHTO M 55 (ASTM A 185)
Cold-Drawn Steel Wire for Concrete Reinforcement	AASHTO M 32 (ASTM A 82)
Fabricated Steel Bar or Rod Mats for Concrete Reinforcement	AASHTO M 54 (ASTM A 184)
Welded Deformed Steel Wire Fabric of Concrete Reinforcement	AASHTO M 221 (ASTM A 497)
Plastic Coated Dowel Bars	AASHTO M 254 Type A
Low Alloy Steel Deformed Bars for Concrete Reinforcement	ASTM A 206

Bar reinforcement for concrete structures, except No. 2 bars shall be deformed in accordance with AASHTO M 42, M 31 and M 53 for Nos. 3 to 11.

Dowel and tie bars shall conform to the requirements of AASHTO M 31 (ASTM A 615/PNS 49) or AASHTO M 42 except that rail steel shall not be used for tie bars that are to be bent and reststraightened during construction. Tie bars shall be deformed bars. Dowel bars shall be plain round bars. They shall be free from burring or other deformation restricting slippage in the concrete. Before delivery to the site of the work, a minimum of one half (1/2) the length of each dowel bar shall be painted with one coat of approved lead or tar paint.

The sleeves for dowel bars shall be metal of an approved design to cover 50 mm, plus or minus 6.3 mm of the dowel, with a closed end, and with a suitable stop to hold the end of the sleeve at least 25 mm from the end of the dowel bar. Sleeves shall be of such design that they do not collapse during construction.

Plastic coated dowel bar conforming to AASHTO M 254 may be used.

SECTION VI- SPECIFICATIONS

CW 6.3 WORKMANSHIP

All steel reinforcement shall be accurately placed in the position shown on the Plans or as required by the NPC Engineer and firmly held there during the placing and setting of the concrete. Bars shall be tied at all intersections except where 238 spacing is less than 300 mm in each directions, in which case, alternate intersections shall be tied. Ties shall be fastened on the inside.

Steel reinforcement shall be stored above the surface of the ground upon platforms, skids, or other supports and shall be protected as far as practicable from mechanical injury and surface deterioration caused by exposure to conditions producing rust. When placed in the work, reinforcement shall be free from dirt, detrimental rust, loose scale, paint, grease, oil, or other foreign materials. Reinforcement shall be free from injurious defects such as cracks and laminations.

All reinforcement shall be furnished in the full lengths indicated on the Plans. Splicing of bars, except where shown on the Plans, will not be permitted without the written approval of the Engineer. Splices shall be staggered as far as possible and with a minimum separation of not less than 40 bar diameters. Not more than one-third of the bars may be spliced in the same cross-section, except where shown on the Plans.

CW 6.4 MEASUREMENT AND PAYMENT

The quantity of concrete to be paid shall be the quantity shown in the Bid Schedule in kilogram.

The accepted quantity, measured as prescribed in the Bid Schedule, shall be paid for at the contract unit price for Reinforcing Steel which price and payment shall be full compensation for furnishing and placing all materials, including all labor, equipment, tools and incidentals necessary to complete the work prescribed in this item.

CW 7.0 ROOFING WORKS**CW 7.1 ROOFING WORKS AND SIDING SHEETS****Description**

This item shall consist of furnishing all pre-painted metal sheet materials, tools and equipment, plant including labor required in undertaking the proper

Installation complete as shown on the Plans and in accordance with this Specification.

Material Requirements

All pre-painted gauge 26 0.5mm thick metal sheet and roofing accessories shall be oven baked painted true to profiles indicated on the Plans as per approval of the NPC Engineer.

Pre-painted Roofing and Siding Sheets

Pre-painted roofing sheets shall be fabricated from cold rolled galvanized iron sheets specially tempered steel for extra strength and durability. It shall conform to the material requirements defined in *PNS 67:2014 Hot-dip Metallic-Coated Steel Sheets for Roofing Specification*. Profile section in identifying the architectural moulded rib to be used is as follows: Regular corrugated, Quad-rib, Tri-wave, Rib-wide, Twin-rib, and others. Desired color shall be subject to the approval of the NPC Engineer.

Gutters, Valleys, Flashings Hip and Ridge roll shall be fabricated from Gauge 26(0.50mm)-rolled plain galvanized iron sheets specially tempered steel. Profile section shall be as indicated on the Plans. Fastening hardware shall be of galvanized iron straps, rivets or J-bolts. G.I. Straps are of 0.500 mm thick x 16 mm wide x 267 mm long (gauge 26 x 5/8" x 10-1/2") and standard rivets.

Base metal thickness shall correspond to the following gauge designation available locally as follows:

1. Base Metal Thickness	Designated Gauge
0.40 mm thick	Gauge 28
0.50 mm thick	Gauge 26
0.60 mm thick	Gauge 24
0.80 mm thick	Gauge 22

2. Protective Coatings	Thickness
Zinc (minimum)	14 microns (100 gm/m ²)
Paint coatings:	
Top Coat	15.20 microns
Bottom Coat	6.8 microns
3. Base Metal Thickness	Overall thickness with protective coats
0.40mm	0.427-0.451 mm
0.50mm	0.532-0.551 mm
0.60mm	0.638-0.651mm
4. Length of roofing sheets- available in cut to length long span length up to 18.29 meters	

Construction Requirements

Before any installation work is commenced, the top face of the purlins should be checked for proper alignment. Correct the alignment as necessary in order to have the top faces of the purlins on an even plane.

Processing of Prepainted Metal Sheets

Fabricated metal sheets is cleaned and pretreated in preparation for painting. Surface contaminants are removed using a suitable alkaline cleaner. The sheet

is then pretreated with a chromate pretreatment. The pretreatment is a uniform, continuous deposit applied in a manner to provide excellent paint adhesion and corrosion resistance. A minimum of two coats of paint are applied to both the face side and back side of the sheet. A corrosion inhibitive primer and a top coat shall be used on the sheet. The primer is a uniform continuous film, compatible with the subsequently applied top coat. It is applied to each surface at a thickness specified by the paint manufacturer with a minimum of 0.2 mm thick. Top coat thickness varies depending on paint type and end use. The face side top coat has excellent long-term outdoor weathering characteristics.

Handling/Lifting/Positioning of Sheets

Sheets shall be handled carefully to prevent damage to the paint coating. Lift all sheets or sheet packson to the roof frame with the overlapping down-turned edgeling towards the side of the roof where installation will commence, otherwise sheets will have to be turned end-to-end during installation.

Installation Procedure

The laying of the roofing panels should begin on the end of the building away from the prevailing wind so that the side-lap seamsface away from the prevailing wind-driven rain thus providing additional security against water penetration. Start roofing installation by placing the first sheet in position with the downturned edge in line with other building elements and fastened to supports as recommended. Fasteners should have corrosion resistanceat least equivalent to the expected life of the basematerial. Place the downturned edge of the next sheet over the edge of the first sheet, to provide side lap and hold the side lap firmly in place. Continue the same procedure for subsequent sheets until the whole roofing area is covered and/or (Adopt installation procedure provided in the instruction manual for each type of Architectural molded rib profile section). Pre-painted metal sheet should not come in direct contact with wet concrete. Concrete'shigh alkalinity attacks the aluminum, causing the coating to peel. It shall also not be placed in contact with copper, lead, or the water run-off. Electrochemical reaction between these elements and the aluminum-zinc alloy coating will lead to premature corrosion of the coating. For walling applications follow the procedure for roofing and allow a minimum end lap of 100 mm for vertical walling. For panel lapping, requirements depend on the product installation guide of a specific type of pre-painted metal sheet as per approval of the Engineer. Provide sealant, butyl tape or caulking along the lap edge to prevent any leaking. Specifications of the sealant and butyl tape shall be as per manufacturer's recommendation per NPC Engineers approval.

Fascia Board

Fascia board shall be fastened where indicated on the Plans by self-tapping screws or galvanized iron straps and rivets. Always begin flashing installation from bottom and work up, so that flashings are lapped on top of the lower flashings. This will prevent moisture from leaking under the flashings and into the structure.

End Laps

In case handling or transport consideration requires to use two (2) or more end tapped sheets to provide full length coverage for the roof run, install each line of sheets from bottom to top or from eave line to apex of roof framing. Provide 150 mm minimum end lap.

Anchorage/Fastening

Pre-painted steel roofing sheets shall be fastened to the wood purlins with standard length G.I. Straps, rivets or bolts. For steel frame up to 4.5 mm thick use self-drilling screw No. 12 by 35 mm long hexagonal head with neoprene washer. For steel support up to 5 mm thick or more use thread cutting screw No. 12 by 40 mm long hexagonal head with neoprene washer. Side lap fastener use self-drilling screw No. 10 by 16 mm long hexagonal head with neoprene washer. Valley fastened to lumber and for walling use self-drilling wood screw No. 12 by 25 mm long hexagonal head with neoprene washer. Valleys fastened to steel supports use self-drilling screws hexagonal head with neoprene washer. Drill size is 5 mm diameter.

Cutting of Sheets

In cutting prepainted steel roofing sheets and accessories, place the exposed color side down. Cutting shall be carried out on the ground and not over the top of other painted roofing product. Power cutting or drilling to be done or carried out on prepainted products already installed or laid in position, the area around holes or cuts shall be masked to shield the paint from hot filings.

Storage and Protection

Prepainted steel roofing, walling products and accessories should be delivered to the jobsite in strapped bundles. Sheets and/or bundles shall be neatly stacked in the ground dry and if left in the open it shall be protected by covering the stack materials with loose tarpauline. Bundles should be stored above ground at a slight angle, to prevent water or condensation build up between adjacent sheets. Removing installation debris and metal fines due to drilling and cutting from the sheet surface and avoiding exposure of insulation to the weather shall be practice at all times.

Payment and Measurement

Measurement and payment shall be made at the contract unit price or lot price as specified in the Bill of Quantities. Payment shall include all cost in furnishing labor, materials, tools, equipment and other incidentals necessary for the satisfactory completion of the project.

CW 8.0 MASONRY/ PLASTERING WORKS

General

Concrete masonry construction shall include the furnishing of all labor, material, and equipment, and performing all operations necessary to execute all concrete masonry construction, as specified.

Contractor shall make all preparations and do all work necessary to receive and adjoin other work.

Contractor shall specify the position of all dowels required for masonry on other construction, including foundations.

Materials:

Concrete Hollow Blocks

All property wall shall be 150mm thick x 200mm x 40mm non-bearing concrete hollow blocks.

Mortar/Grout

Cement mortar proportions for laying the Concrete Hollow Blocks shall consist of one (1) part Portland cement (Portland cement of approved brand conforming to ASTM specifications C150, Type I), and three (3) parts fine sand. Only sufficient water to make a workable mix will be permitted.

Reinforcing Steel

Reinforcing steel shall be 10mm diameter, Grade 40, spaced at 600mm on-center along horizontal and vertical of the walls. Reinforcement shall be secure with a Ga. 16 tie wire.

Masonry Construction

Blocks shall be cut accurately to fit all plumbing ducts, openings, electrical work, and all voids slushed full. Where walls are to receive plaster, the joints should be struck flush. Where certain joints are to be concealed underpaint, these joints shall be filled flush and then sacked to produce a dense surface without sheen.

Vertical head joints shall be buttered well for a thickness equal to the face shell of the block and these joints shall be shoved tightly so that the mortar bonds well to both blocks. Joints shall be solidly filled from the face of the block to the depth of the face shell.

Grouting

Reinforcing steel shall be in place and inspected before grouting starts. Vertical cells to be filled with mortar shall have vertical alignment to maintain a continuous unobstructed cell area. Cells containing reinforcement shall be solidify filled with grout.

PLASTERING

Mixture

Mortar mixture for first coat shall be freshly prepared and uniformly mixed in the proportion by volume of one part Portland cement, three (3) parts sand. Finish coat shall be pure Portland cement properly graded. Hydraulic Cement and mixed with water to approved consistency and plasticity.

Surface Preparation

- a) After removals of formworks, reinforce concrete surfaces shall be roughened to improve adhesion of cement plaster.

- b) Surfaces to receive cement plaster shall be cleaned of all projections, dust, loose particles, grease and bond breakers. Before any application of brown coat is commenced all surfaces that are to be plastered shall be wetted thoroughly with clean water to produce a uniformly moist condition.

Application

- a) First coat mortar mix shall be applied with sufficient pressure starting from the lower portion of the surface to fill the grooved and to prevent air pockets in the reinforced concrete/masonry work and avoid mortar mix drooping. The coat shall be lightly broom/scratch before surface had properly set and allowed to cure.
- b) Finish coat shall not be applied until after first coat has seasoned for seven days and corrective measures had been done by the Contractor on surfaces that are defective. Just before the application of the finish coat, the first coat surface shall be evenly moistened with potable water. Finish coat shall be floated first to to the even surface, then troweled in a manner that will force the mixture to penetrate into the first coat. Surfaces applied with finish coat shall then be smooth with paper in a circular motion to remove trowel marks, checks and blemishes. All cement plaster finish shall be 10mm thick minimum on vertical concrete and/or masonry walls.

Workmanship

Cement plaster finish shall be true to details and plumb. Finish surface shall have no visible junction marks where one (1) Day's work adjoins the other. Where directed by the NPC or as shown on the Plans vertical and horizontal groove joints shall be 25mm wide and 10mm deep.

Measurement and Payment

Measurement and payment shall be made at the contract unit price or lot price as specified in the Bill of Quantities. Payment shall include all cost in furnishing labor, materials, tools, equipment and other incidentals necessary for the satisfactory completion of the project.

CW 9.0 STEEL WORKS

CW 9.1 GENERAL SCOPE

This item shall consist of furnishing, fabricating and placing all steel fence works in accordance with the AISC "Manual of Steel Construction" and materials, tools and equipment, including labor required in undertaking the proper installation complete as shown on the Plans and in accordance with this Specification.

CW 9.2 MATERIALS

- a) Angle bars shall have a thickness of 6mm.
- b) All C-Purlins must be 2"x4"x1.5mm thick.
- c) The flat bar for fascia frame shall have a thickness of 2.5mm.
- d) Window Grill 16mm round bar grade 40.
- e) All steel bars shall be painted with Redoxide
- f) All arc-welding electrodes shall conform to the requirements of the American Welding Society "SPECIFICATIONS FOR IRON AND STEEL ARC_WELDING ELECTRODES" latest edition.

Connections

Shop connections shall be welded unless otherwise indicated in the Plans. All connections shall develop full strength of members.

Workmanship and Fabrication

1. Workmanship and fabrication shall be in accordance with AISC "Specification for Fabrication and Erection of Structural Steel for Buildings" and with the following outline:
 - Bearing surfaces shall be planed to true beds. Abutting surfaces shall be closely fitted.
 - All columns and bearing stiffeners shall be milled to give full bearing over the cross section. It shall not be necessary to plane bottom surfaces of plate on grout beds.

- Assembled parts shall be brought into close contact, and drift pin shall be used only for bringing members into position, not to enlarge or distort holes.

Welding

- Welding in shop and field shall be done by qualified welders. Equipment shall be of type, which produce current so that operator may produce satisfactory welds. The welding machine shall be of 300 amperes, 200-240 volts capacity.
- Unless otherwise shown on Plans, the following low hydrogen electrodes shall be used and shall be suitable for positions and other conditions of intended use in accordance with the instruction with each container.

Welding	Electrode	Submerged Process	Arc
A-7 to A-7	E- 60 Series	Grade SAW-2	
A-7 to A-36	E- 60 Series	Grade SAW-2	
A-36 to A-36	E- 60 Series	Grade SAW-2	

- The appearance and quality of welds made, and the methods of correcting defective work shall conform to the American Welding Society code for Arc Welding. Surfaces to be welded shall be free from loose scale, rust, grease, paint and other foreign material except that mill scale, which withstands vigorous wire brushing, may remain.
- Finish members shall be true to line and free from twists, bends and open joints.

Measurement and Payment

Measurement and payment shall be made at the contract unit price or lot price as specified in the Bill of Quantities. Payment shall include all cost in furnishing labor, materials, tools, equipment and other incidentals necessary for the satisfactory completion of the project.

CW 10.0 CEILING WORKS

CW 10.1 GENERAL SCOPE

This item shall consist of furnishing all plant, labor, equipment and tools, articles, appliances and materials and in performing all operations with the installation of all Ceiling fixtures and fitting, in strict accord with the specifications or indicated on the drawings, are included in this item.

CW 10.2 MATERIALS

Thickness of the Spandrel shall be as indicated on the drawings or the Bill of Quantities, rotary cut. Sheets shall be riveted to the metal framing or joist at 400mm (16") on center. Metal furring framing shall be .5mm thick, 50mm x 50mm and metal framing shall be .5mm thick, 25mm x 25mm at 400mm O.C.B.W with .5mm thick wall angle and .6mm thick carrying channel.

CW 10.3 WORKMANSHIP

Spandrel and its frames shall be installed free and open in a manner to afford access for cleaning. All metal framing and hanger required to support the fixtures shall be furnished in a rigidly manner.

CW 8.4 MEASUREMENT AND PAYMENT

Measurement and payment for Spandrel and metal furring and other fixtures will be based on the number of sets installed and accepted by the NPC representative.

The accepted quantity, measured as prescribed in the Bid Schedule, shall be paid for at the contract unit price which price and payment shall be full compensation for furnishing and placing all materials, including all labor, equipment, tools and incidentals necessary to complete the work prescribed in this item.

CW 12.0 DOORS, ROLLUP & CABINET

CW 9.1 GENERAL SCOPE

This item shall consist of furnishing all plant, labor, equipment and tools, articles, appliances and materials and in performing all operations with the installation of all Door with Glass and Metal Framing fixtures and fitting.

SECTION VI- SPECIFICATIONS

motorized rollup & cabinet, in strict accord with the specifications or indicated on the drawings, are included in this item.

CW 12.2 MATERIALS

Metal Door, Metal Tools Cabinet, Motorized Rollup & its fixtures to be used shall conform to the drawings shown in the plans or as per bill of materials. It shall be a products of reputable, national known manufacturers approve by the NPC representative.

CW 12.3 WORKMANSHIP

Door, Rollup & Cabinet shall be installed free and open in a manner to afford access for cleaning. All brackets, cleat and anchors required to support the fixtures shall be furnished in a rigidly manner. It shall be kept clean and in working order for adequate protection so as not to be used by anybody until issuance of Certificate of Completion.

All Fixtures shall be provided with individual control stop so that each fixture may be separately controlled without affecting any other fixture.

CW 12.4 MEASUREMENT AND PAYMENT

Measurement and payment for metal door, metal cabinet and motorized rollup will be based on the number of sets installed and accepted by the NPC representative. The accepted quantity, measured as prescribed in the Bid Schedule, shall be paid for at the contract unit price which price and payment shall be full compensation for furnishing and placing all materials, including all labor, equipment, tools and incidentals necessary to complete the work prescribed in this item.

CW 13.0 ELECTRICAL WORKS**General**

The work to be done under this section consist of furnishing and installation of complete power, lighting & outlet system of the security bunkhouse indicated in the plans and specified herein.

STANDARD OF MATERIALS

All materials to be used in the work shall be new, of high quality, free from all defects and of proven acceptability for the purpose of intended. Unless otherwise specified, materials shall conform to the latest applicable standard issued by the following authorities:

1. American National Standard Institute (ANSI)
2. Institute of Electrical and Electronic Engineers (IEEE)
3. Underwriter's Laboratory (UL)
4. National Electrical Manufacturer's Association (NEMA)
5. National Electrical Code (NEC)
6. Philippine Electrical Code (PEC)

Lighting System

The lighting system covered by this specification includes lighting and power outlets (convenience and power), switches, associated conduits conductors, lighting fixtures, fittings, etc.

The device/materials furnished shall be in accordance with the latest issues of the Applicable Codes and Standards, including all addenda, in effect at time of purchase order unless otherwise stated in this specification.

All materials and parts which are not specifically mentioned herein but are necessary for the proper installation and safe operation of the lighting system shall be identified by the Contractor and shall be furnished at no additional cost to NPC.

Cables/Wires

Cable shall be stranded annealed copper conductor suitable for continuous temperature of 90 deg. C when used in wet or dry location and 90 degrees when exposed to oil or coolant. The minimum size of conductor to be used shall be 5.5mm².

The cables shall be designed for trouble free service for the highest system voltage. All cables and their accessories to be supplied shall have insulation levels

SECTION VI- SPECIFICATIONS

able to withstand any voltage surges which are normally expected to occur in the power system in which are normally expected to occur in the power system in which the cable is to be employed, due to switching operations, sudden load variation, faults, etc.

The cables and accessories shall be constructed to fulfil the requirements when operating with full load factor and is suitable for use in ducts, trays and/or direct burial in ground.

Lighting Fixtures Accessories**Lighting Fixtures**

All lighting fixtures when installed shall be free of leaks, warps, dents and other irregularities.

The hangers, power conductors, supports, channels, frames and brackets of all kinds for safety and proper installation of lighting fixtures shall be furnished and installed by the contractor at his own expense.

Lighting fixtures shall be wired with approved fixture wire, 90°C insulation. Each fixture shall be wired to a single point with an adequate slack for proper connection. All lighting fixtures shall be protected from damage during installation. Any broken lighting fixtures, gloves, receptacles, stems and the like shall be replaced with parts, at no cost to NPC.

Lighting

12watts Pin Light suitable for the type of lamp shown in the bid drawings complete with the required control gears and other accessories.

Conductors

Power conductors shall be stranded annealed copper, suitable for continuous temperature of 90°C. The minimum size of ungrounded conductor to be used shall be 3.5mm².

SECTION VI- SPECIFICATIONS

Insulation shall be suitable for wet and dry locations, fungi resistant and ultraviolet stable. All conductors shall be moisture and heat resistant thermoplastic or cross-linked synthetic polymer unless otherwise specified by NPC.

Conductor Installation

Power conductors pulled through conduits shall be supported in an approved manner so as to avoid damaged to the insulation. Grease or oily substances shall not be used to facilitate the passage of the conductor in conduits

The pull shall be applied to conductors only by means of approved grips and the end portion of the conductor, which has been marked or deformed by the grip, shall be cut-off by the Contractor.

All conductor runs shall be continuous and all termination shall be at terminal boards, equipment, etc. No splices are allowed in conduit or cable tray.

Prior to installation of conductors, conduits and cable tray shall be thoroughly cleaned to prevent damage to conductor during installation. After conductors have been installed, conductors shall be tested for continuity and insulation resistance and shall be tagged with respective conductor number.

The contractor shall submit catalogues and/or brochures showing details of conductor insulation and capacity ratings of all types of conductors to be supplied for approval of NPC.

Conduit System

All embedded and combined in ceiling conduits, boxes and fitting required for the power and control conductors including all necessary hardware and accessories such as screws, bolts, concrete inserts, clamps, locknuts, couplings shall be furnished by the Contractor. The required quantities of various items of conduits and associated materials shall be furnished in accordance with the installation requirements.

During installation, due precaution shall be taken to protect the conduit and threads from mechanical injury. The ends of the conduit shall be sealed in an

approved manner. Conduit runs shall be sealed by the use of caps and discs or plugs. The seals shall be maintained, except during inspection and tests, until the conductor is pulled in. Conduit shall be checked to be free from obstructions by pulling a wooden mandrel of appropriate size through the conduit.

Conduits running in floors and terminating at equipment mounted on concrete bases shall be brought up to the equipment within the concrete bases wherever possible.

All joints between lengths of conduits and threaded connection to boxes, fittings and equipment enclosures shall be made watertight.

Conduits installed outdoors running underground shall be buried to a minimum of 0.60m.

Non-Metallic Conduits

Non-metallic conduit shall be made of un-plasticized polyvinyl chloride (uPVC) smooth walled inside and outside, colored red-orange, schedule 40.

The uPVC conduits shall be non-corrosive and weatherproof, resistant to the attacks of acids and alkalis and must have a self-extinguishing property hence shall not support combustion. It shall resist corrosion, rust and scale.

Junction/Utility Box

Junction/ Utility Boxes

All junction/utility boxes for concealed work shall be of hot dip galvanized steel or un-plasticized polyvinyl Chloride. All walls boxes on exposed work shall be of aluminum blasted cast iron.

Utility boxes shall be firmly anchored in place and where required provided with fixture supports. The Contractor shall provide special supports for recessed lighting fixtures, etc. Suitable expansion screws shall be used for securing boxes to solid masonry and approved type toggles for securing to hollow masonry units.

Pull Boxes

SECTION VI- SPECIFICATIONS

Pull boxes shall be installed at all necessary points, to prevent damage to the insulation or other damage that might result from pulling resistance or for other reasons related to improper installation. All pull boxes shall be made of galvanized sheet steel not less than 2mm or un-plasticized polyvinyl chloride. Where pull boxes are used in connection with exposed conduits, plain covers attached to the pull box with a suitable number of countersunk flathead machine screws may be used.

Measurement and Payment

Measurement and payment shall be made at the contract unit price or lot price as specified in the Bill of Quantities. Payment shall include all cost in furnishing labor, materials, tools, equipment and other incidentals necessary for the satisfactory completion of the project.

CW-15.0 PAINTING WORKS**CW 15.1 GENERAL SCOPE**

This item shall consist of furnishing all plant, labor, equipment and tools, articles, appliances and materials and in performing all operations with the installation of all painting fixtures. In strict accord with the specifications or indicated on the drawings, are included in this item.

CW 15.2 MATERIALS

All paint materials shall meet the requirements of the Philippine National Standard Specifications for Paintings.

Paints shall be brought to the Site in tightly closeable, convenient, original containers, if nothing to the contrary is stipulated in the Specifications. The containers shall be marked in a durable manner with the following particulars:

- Maker
- Paint and relevant thinner
- Gross and net weights
- Date of supply by the maker's factory

Only thinners supplied by makers of the paint or those described by them as suitable shall be used for adjusting paints to working consistency. The instructions of the maker shall be followed in this respect.

With the exception of ready-mixed materials in original containers, all mixing shall be done at the job site. No materials are to be reduced or changed except as specified by the Manufacturer of said materials.

Surfaces to be painted must be thoroughly inspected. There might be some portion that needs further re-surfing and finishing. For wood surface, apply Davies Interior Primer & Sealer followed by Gloss-It Quick Drying Enamel with at least Two (2) coats.

CW-15.3 WORKMANSHIP

All work shall be done by skilled painters in a workmanlike manner. All paints shall be evenly applied so as to be free from sags, runs, crawls or other defects. All painting materials shall meet the requirements of stress and shall be in accordance with the relevant standards. All coatings shall be of proper consistency and well brushed out so as to show the minimum of brush marks, except varnish and enamel which shall be uniformly flowed on. All brushes shall be clean and in good condition, with heavy brushes preferred. Light brushes shall not be permitted.

Paint shall be thoroughly stirred so as to keep the pigment evenly in suspension when paint is being applied.

No painting shall be done under conditions that are unsuitable for the production of good results. No oil painting shall be done in damp weather.

Application of succeeding coats shall strictly follow the over-coating times specified by the paint manufacturer. If no specific data are available, all coats shall be thoroughly dry before painting shall be applied. At least twenty-four (24) hours shall be allowed between coats. Exterior painting under damp/wet conditions is not allowed.

Painting coat as specified are intended to cover the surfaces perfectly, if surfaces are not fully covered, further coat shall be applied to attain the desired evenness of the paint application.

All parts of mouldings and ornaments shall be left clean and true to details. All finish shall be uniform as to sheen, color and texture, except when glazing is required.

CW 15.4 MEASUREMENT AND PAYMENT

The unit of measure shall be in square meter.

The accepted quantity, measured as prescribed in the Bid Schedule, shall be paid for at the contract unit price which price and payment shall be full compensation for furnishing and placing all materials, including all labor, equipment, tools and incidentals necessary to complete the work prescribed in this item.

CW 16.0 CLEARING AND DEMOBILIZATION

CW 16.1 General Scope

This item shall consist of the disposition of entire Contractor's camp facilities, clearing and cleaning at the work site.

CW 16.2 Workmanship

Before moving out, the contractor shall restore the orderly state of worksite by clearing all temporary structures. Remove all excess/wastematerials and store in designated areas.

Before the Contractor will demobilize its construction equipment/ tools, materials and crew, he shall secure approval from NPC and a joint inspection with the NPC Inspector and Contractor will be conducted to make sure that all his accomplishment / work that needs remedial attention or correction shall be done prior to the issuance of the Certificate of Completion.

CW 16.4 MEASUREMENT AND PAYMENT

Work prescribed herein shall not be measured and paid separately; same shall be deemed to be included in pay items for other items for work.

BID DOCUMENTS

SECTION VII- DRAWINGS

- NAME OF PROJECT: ABM CONSTRUCTION OF STANDBY DIESEL
POWER HOUSE SPILLWAY & INTAKE
PR NO/REF, NO.: MG-A7M25-128/INFRA2025-AGS-029

Section VII: Drawings

Sheet No. 1/15: Location Plan

Sheet No. 2/15: Perspective

Sheet No. 3/15: Floor Plan, Reflected Ceiling Plan

Sheet No. 4/15: Roof Plan, Roof Framing Plan 1, Roof Framing Plan 2

Sheet No. 5/15: Roof Framing, Main Steel Girt, Typ. Girt Detail

Sheet No. 6/15: Front Elevation, Rear Elevation

Sheet No. 7/15: Right Side Elevation, Left Side Elevation

Sheet No. 8/15: Section A'-A , Section B'-B

Sheet No. 9/15: Additional Steel Cabinetry

Sheet No. 10/15: Foundation Plan, Lintel Beam Layout, Roof Beam Layout

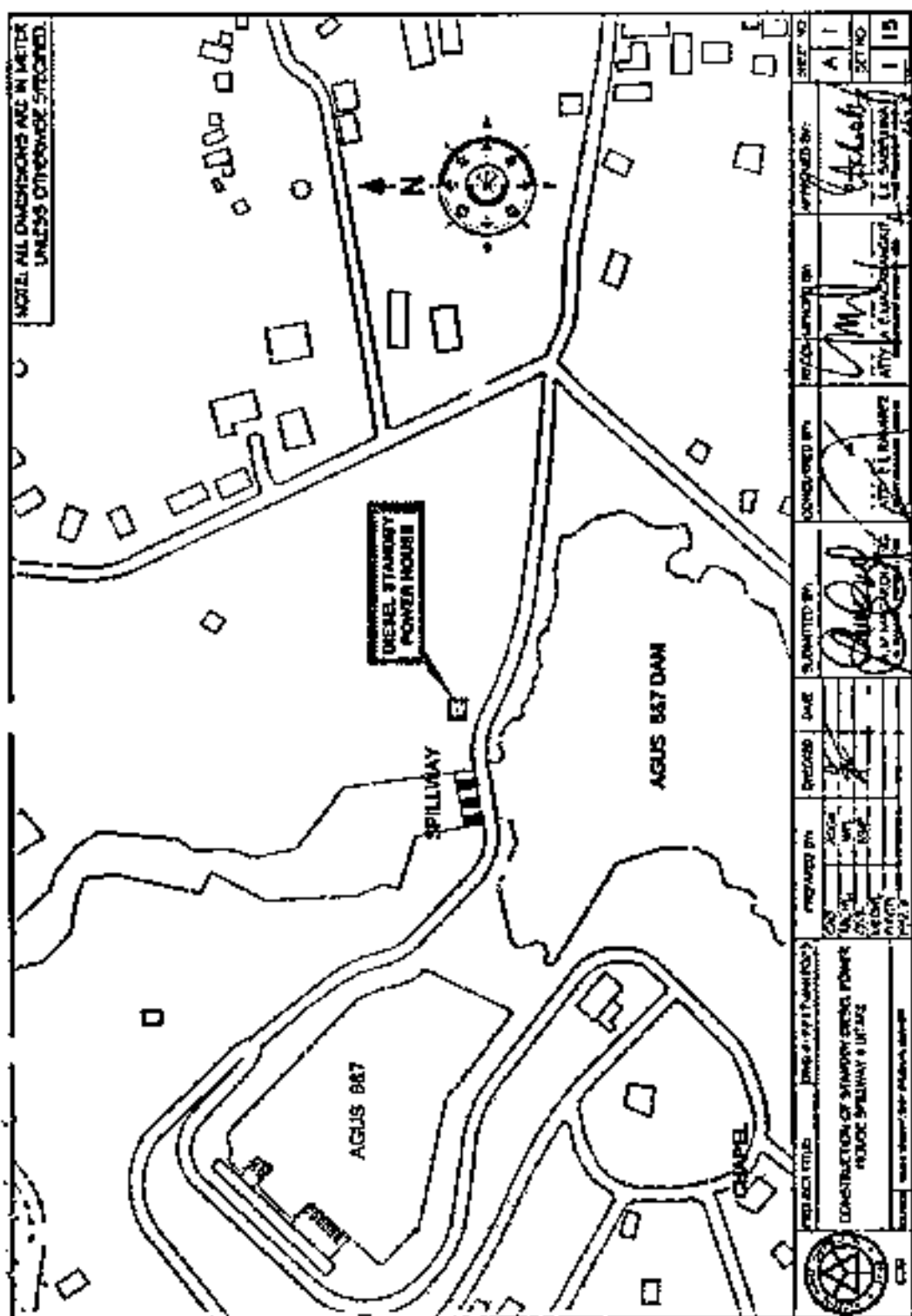
Sheet No. 11/15: Column Footing Detail – 2, Column Footing Detail – 1, Beam Schedules

Sheet No. 12/15: Lighting Layout Plan, Power Layout Plan

Sheet No. 13/15: Service Entrance Detail

Sheet No. 14/15: Canal System, Drainage Detail

Sheet No. 15/15: Oil Water Separator

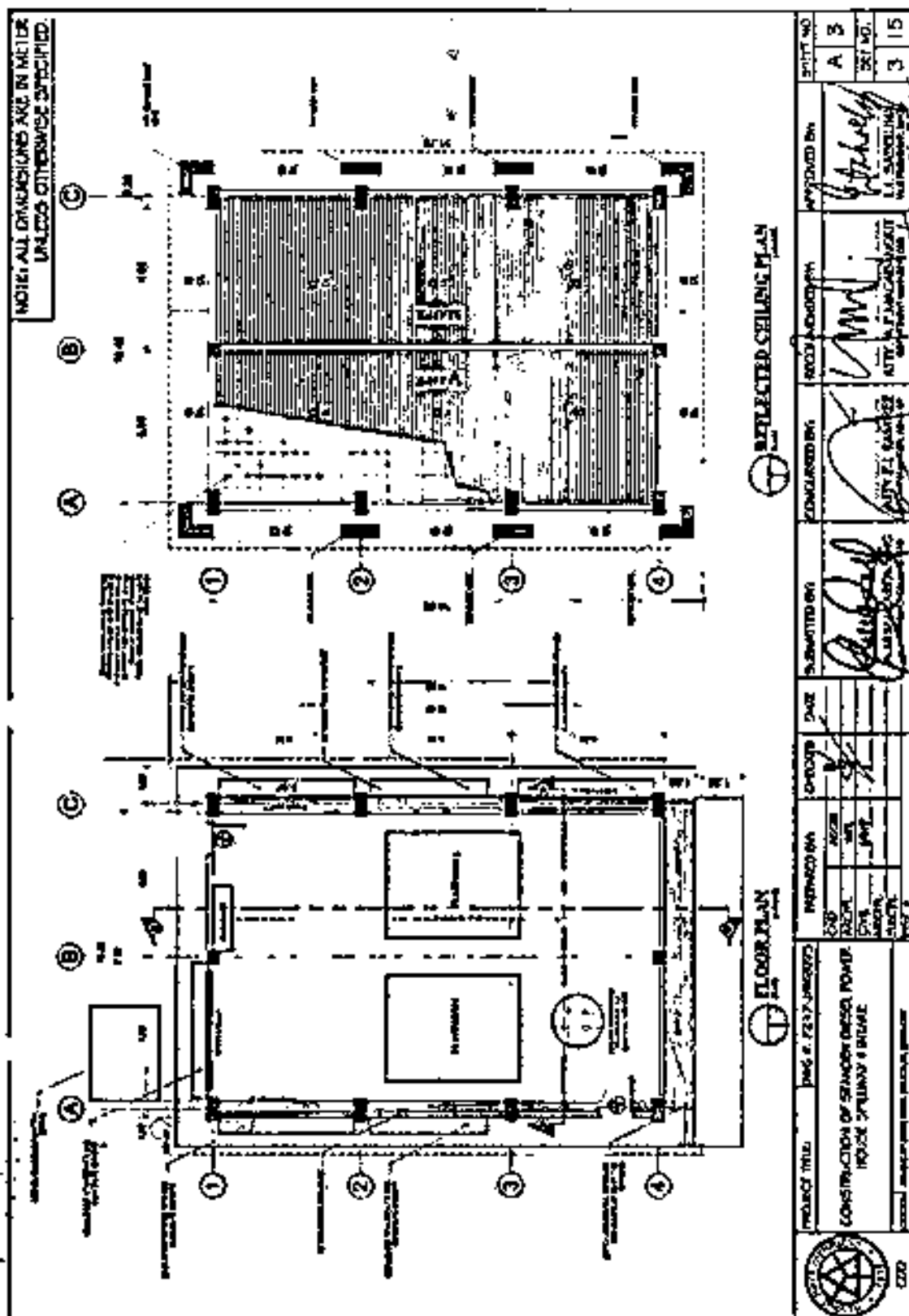


BID DOCUMENTS

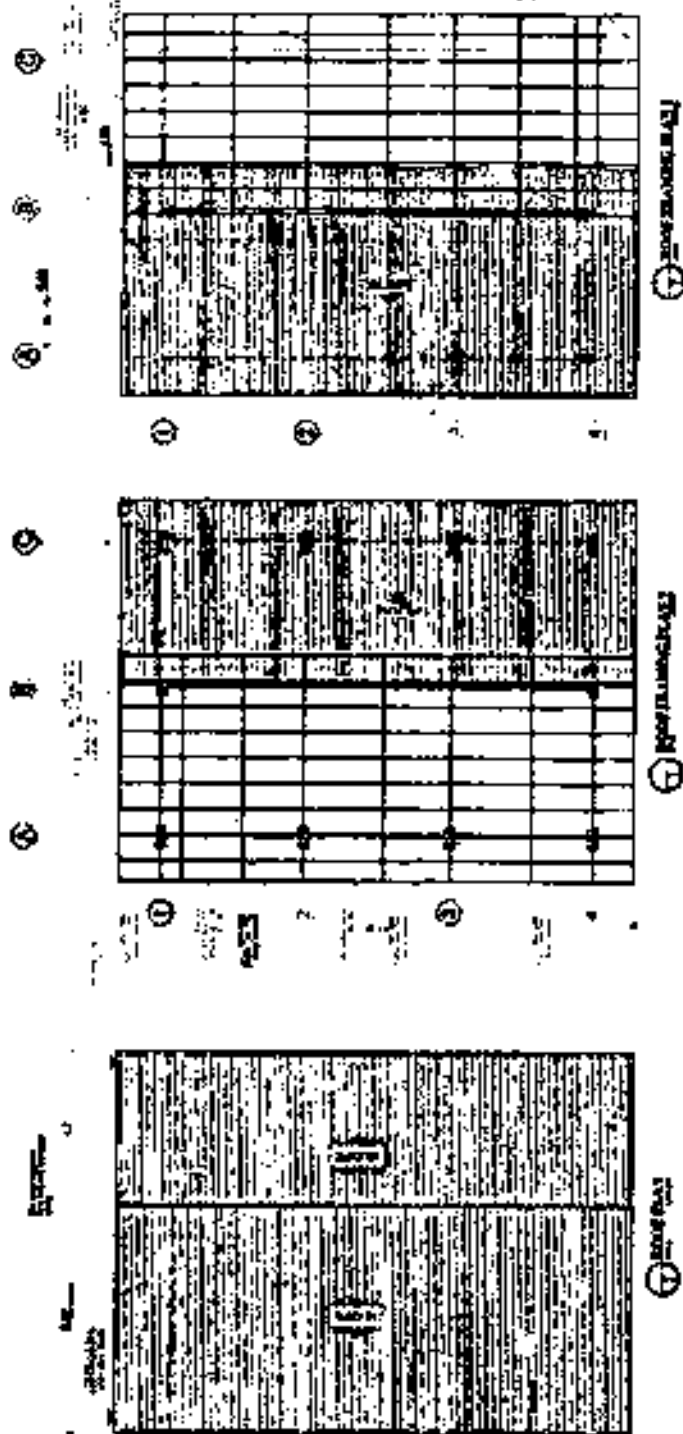
SECTION VII- BILL OF QUANTITIES

NAME OF PROJECT: A&M CONSTRUCTION OF STANDBY DIESEL
POWER HOUSE SPILLWAY & INTAKE

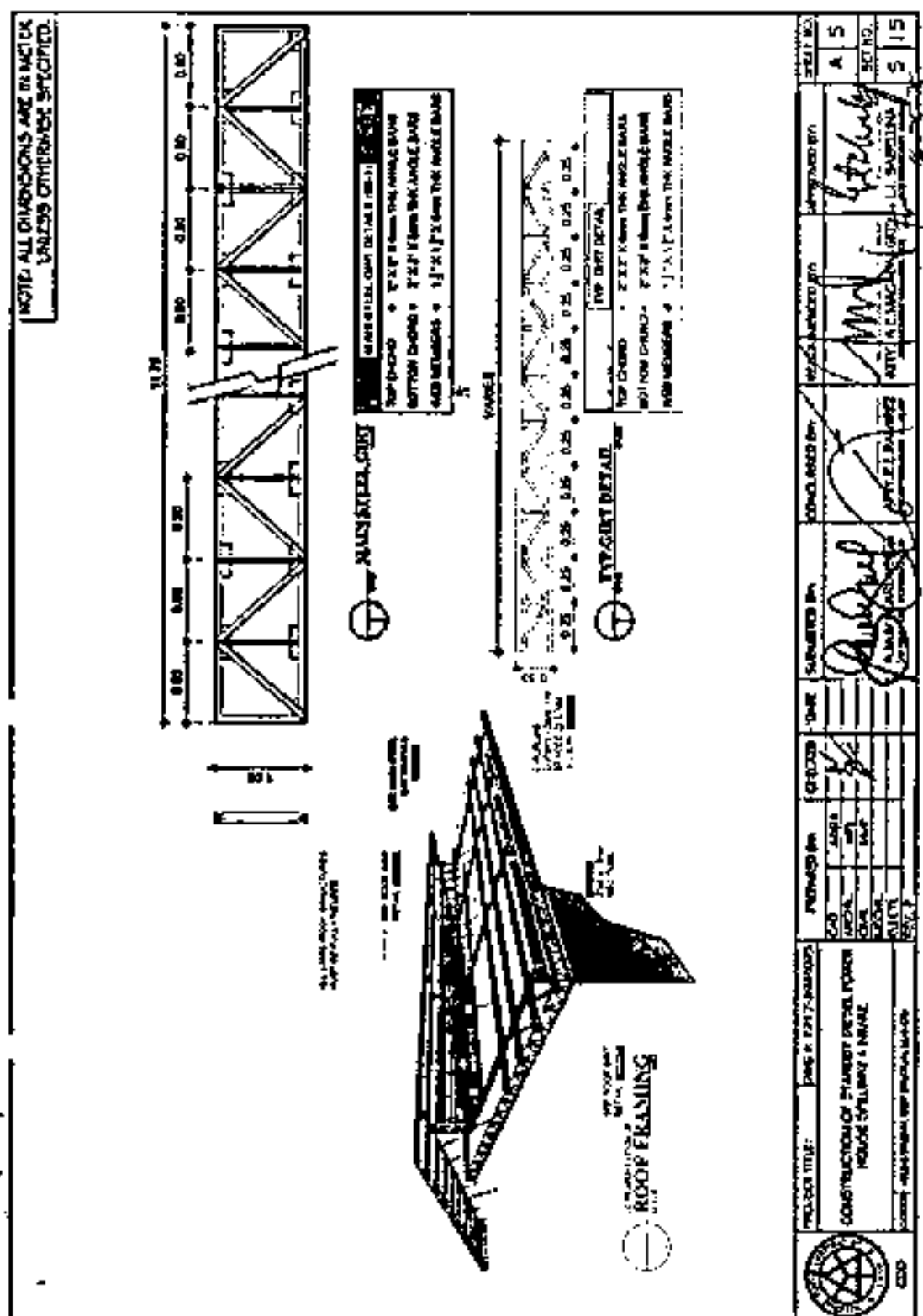
PR NO/REF. NO.: MG-ATN/25-126/INFRA2025-A06-029



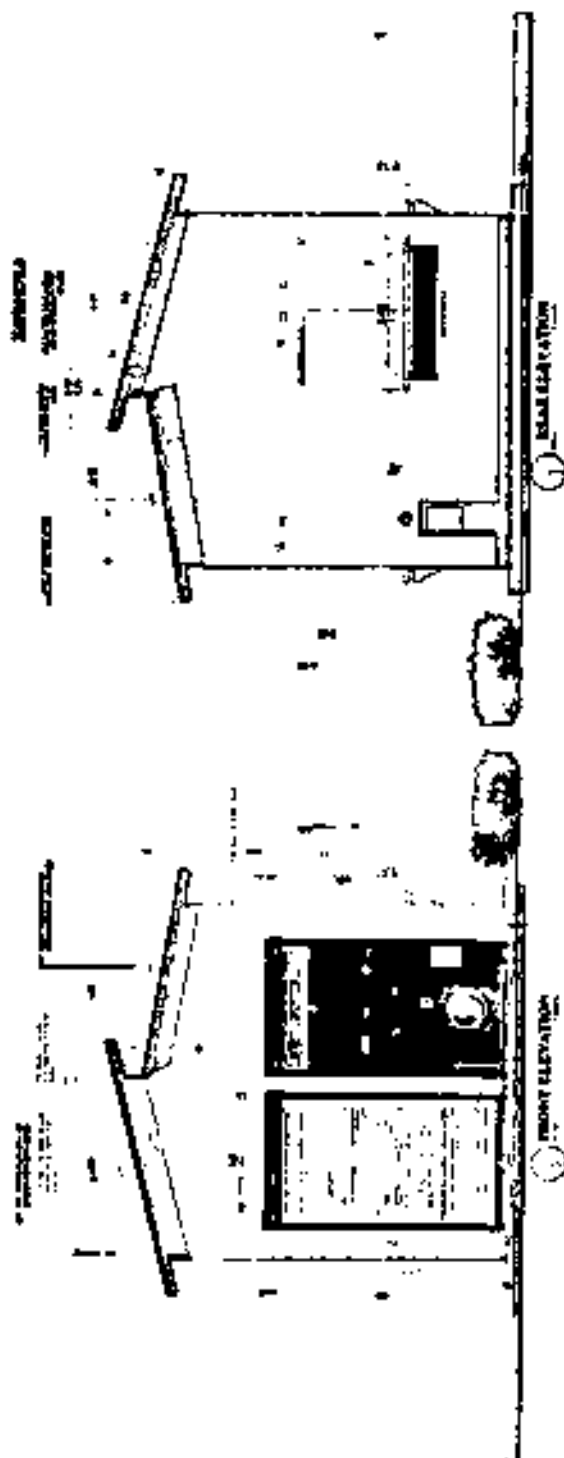
NOTE: ALL DIMENSIONS ARE IN METERS
UNLESS OTHERWISE SPECIFIED.



	PROJECT NO.:	100-1000000000	DATE:	10/04/2025	DESIGNED BY:	1000000000	APPROVED BY:	1000000000	SHEET NO.:	15
	CONSTRUCTION OF STANDBY DIESEL POWER HOUSE SPILLWAY & INTAKE		DATE:	10/04/2025	DESIGNED BY:	1000000000	APPROVED BY:	1000000000	SHEET NO.:	15
SITE: AGM CONSTRUCTION OF STANDBY DIESEL POWER HOUSE SPILLWAY & INTAKE		DATE:		10/04/2025	DESIGNED BY:	1000000000	APPROVED BY:	1000000000	SHEET NO.:	15



NOTE: ALL DIMENSIONS ARE IN METERS
UNLESS OTHERWISE SPECIFIED.



	PROJECT NO. 15	DATE: 15/05/2025	SCALE: 1:50	DESIGNER: AGM	CLIENT: AGM	PROJECT NAME: CONSTRUCTION OF STANDBY DIESEL POWER HOUSE SPILLWAY & INTAKE
	PROJECT NO. 15	DATE: 15/05/2025	SCALE: 1:50	DESIGNER: AGM	CLIENT: AGM	PROJECT NAME: CONSTRUCTION OF STANDBY DIESEL POWER HOUSE SPILLWAY & INTAKE
APPROVED BY:	APPROVED BY:	APPROVED BY:	APPROVED BY:	APPROVED BY:	APPROVED BY:	APPROVED BY:
DATE: 15/05/2025	DATE: 15/05/2025	DATE: 15/05/2025	DATE: 15/05/2025	DATE: 15/05/2025	DATE: 15/05/2025	DATE: 15/05/2025

NOTE: ALL DIMENSIONS ARE IN METERS
UNLESS OTHERWISE SPECIFIED.

LEFT SIDE ELEV.

RIGHT SIDE ELEV.

NOTE: ESTIMATE FOR 10% INCLUDED IN THE PROJECT COST

	PROJECT TITLE	CONSTRUCTION OF STANDBY DIESEL POWER HOUSE SPILLWAY & INTAKE				SHEET NO.	A 7
	DRAWN BY	CHECKED BY	DATE	APPROVED BY	SHEET NO.	7	15
	DESIGNER	DATE	APPROVED BY	DATE	APPROVED BY		
	DESIGNER	DATE	APPROVED BY	DATE	APPROVED BY		

SECTION A-A

SECTION B-B

NOTE: ALL DIMENSIONS ARE IN METERS
UNLESS OTHERWISE SPECIFIED.

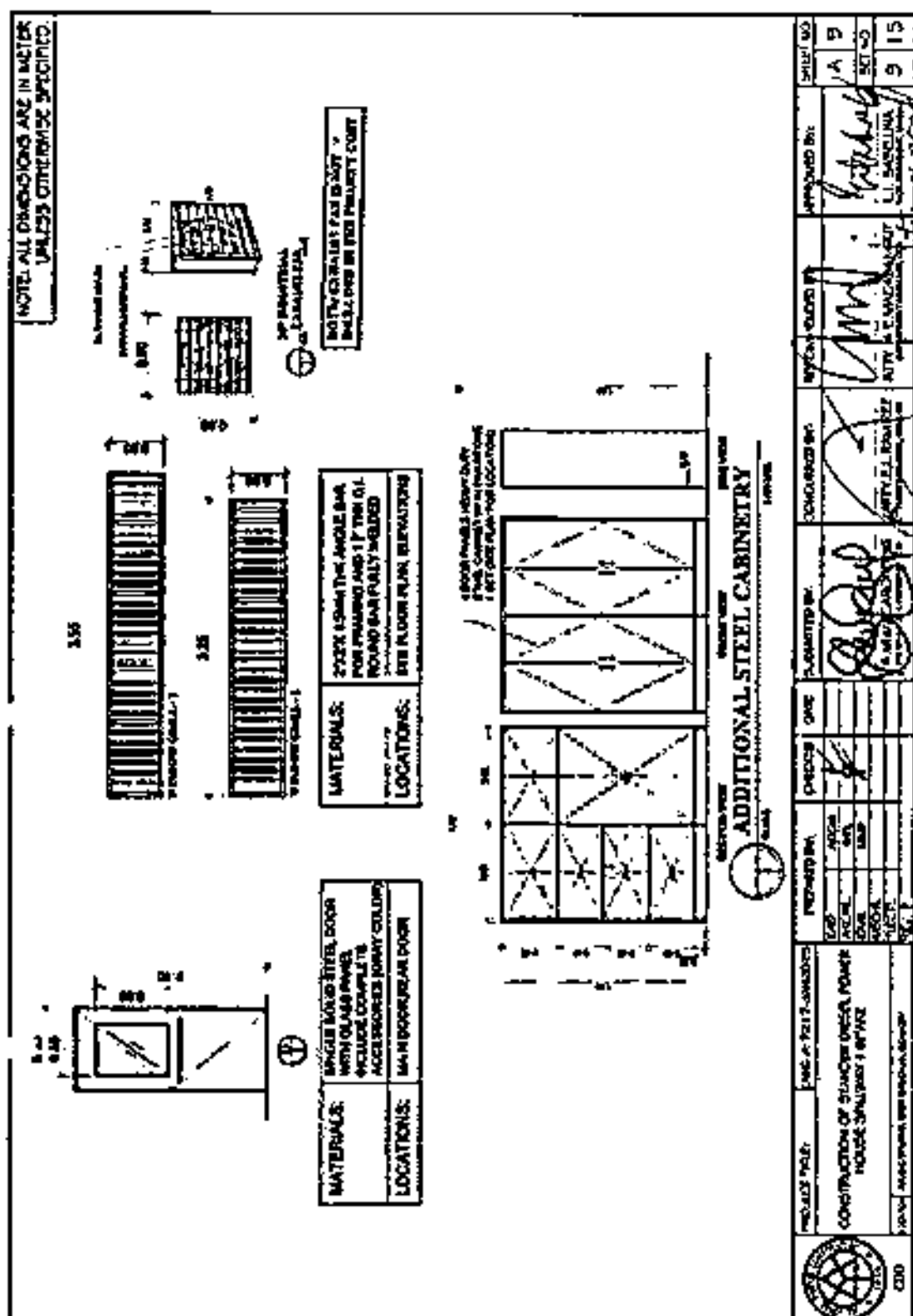
	PROJECT TITLE	PREPARED BY	DATE	DRAWN BY	CHECKED BY	APPROVED BY	DATE
	CONSTRUCTION OF STANDBY DIESEL POWER HOUSE SPILLWAY & INTAKE	<div style="display: flex; justify-content: space-between;"> <div> <p>DESIGNED BY</p> <p>PROJECT</p> <p>SCALE</p> <p>DATE</p> </div> <div> <p>1:100</p> <p>10/10/2025</p> </div> </div>	10/10/2025	10/10/2025	10/10/2025	10/10/2025	10/10/2025
<p>PROJECT NO. / SHEET NO.</p> <p>10/10/2025 / 10/10/2025</p>		<p>APPROVED BY: <i>[Signature]</i></p> <p>DATE: 10/10/2025</p>					

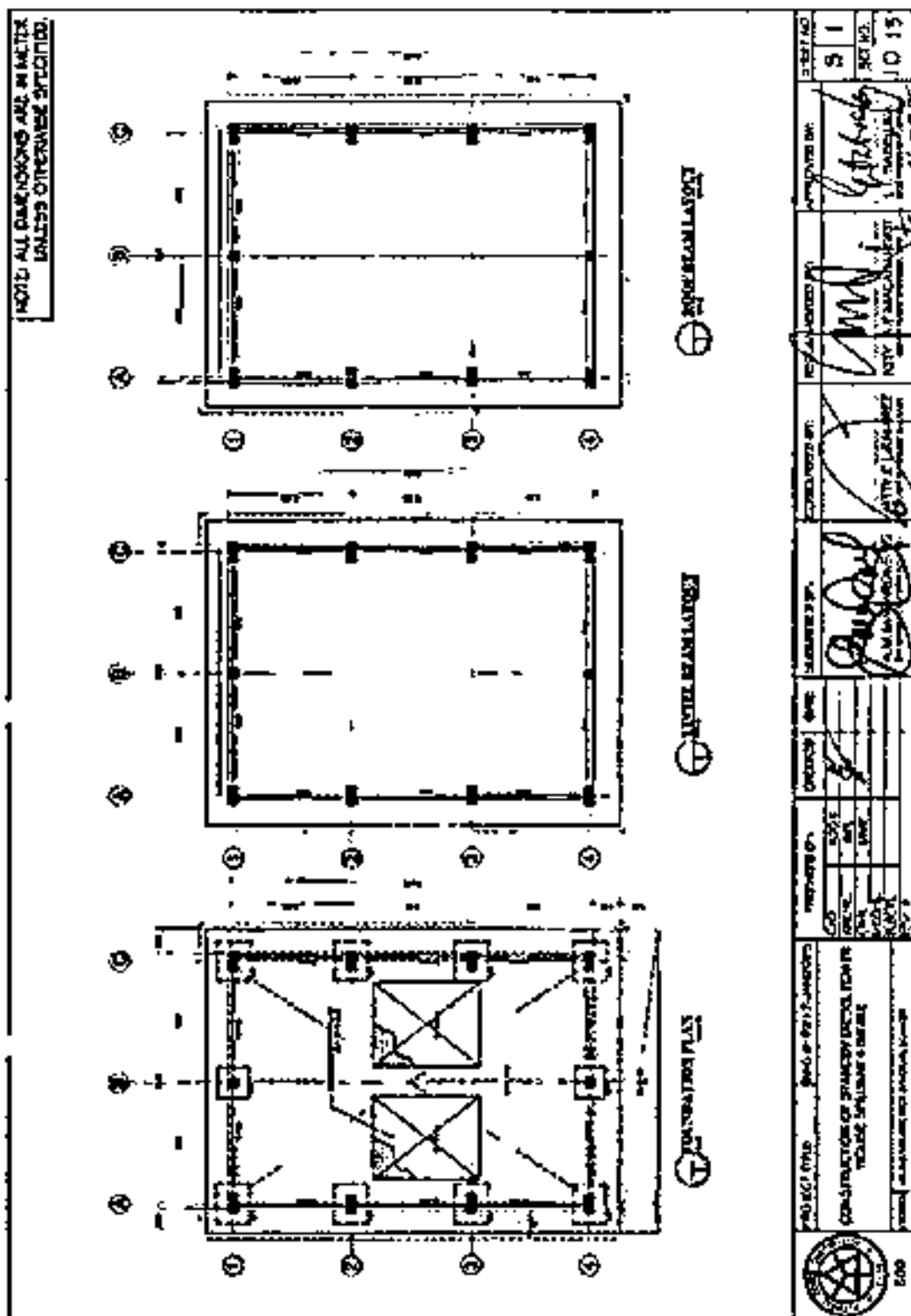
BID DOCUMENTS

SECTION VIII- BILL OF QUANTITIES

NAME OF PROJECT: A&M CONSTRUCTION OF STANDBY DIESEL
POWER HOUSE SPILLWAY & INTAKE

PR NO./REF. NO.: MG-A7M25-126/INFRA2025-AGS-029



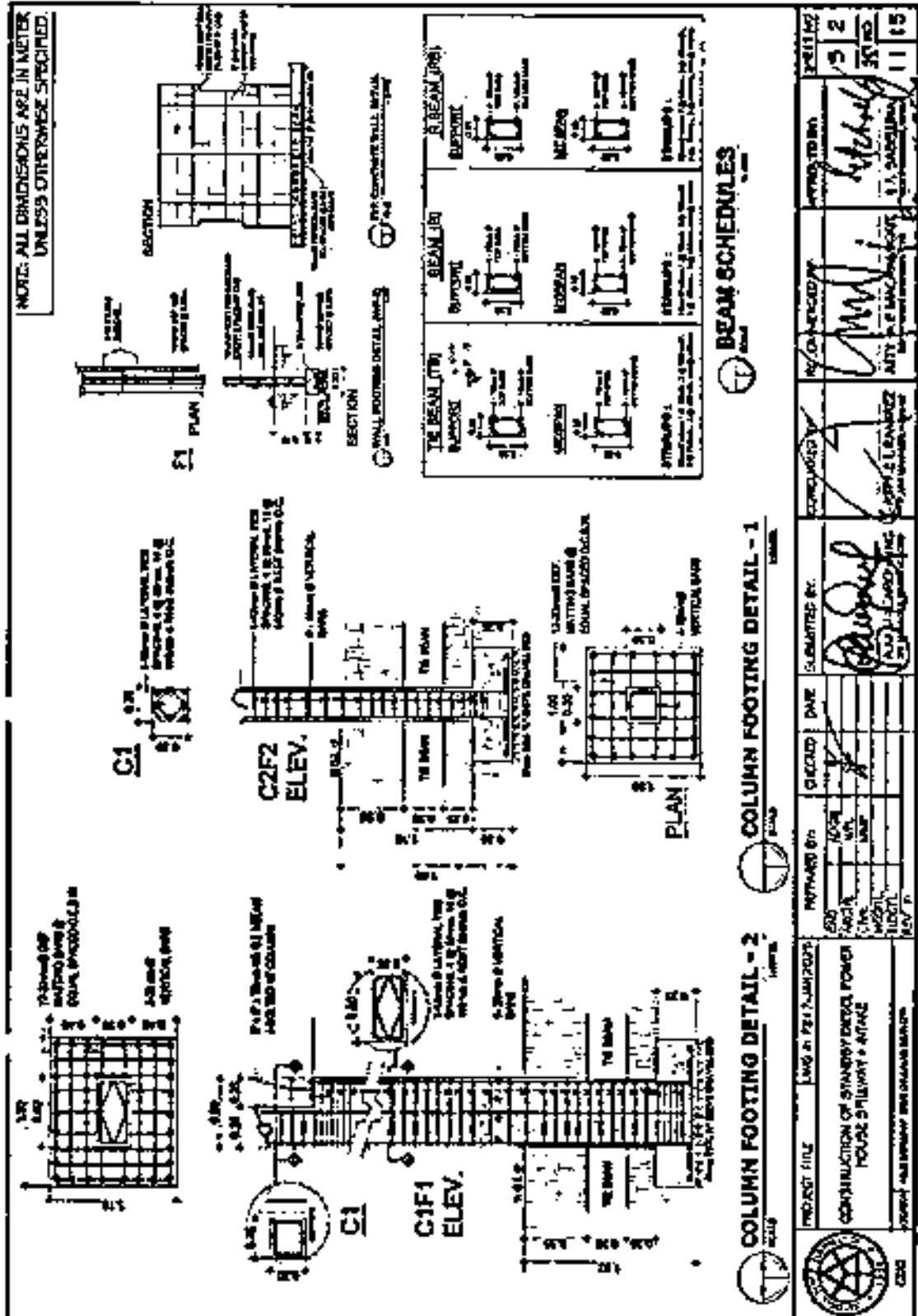


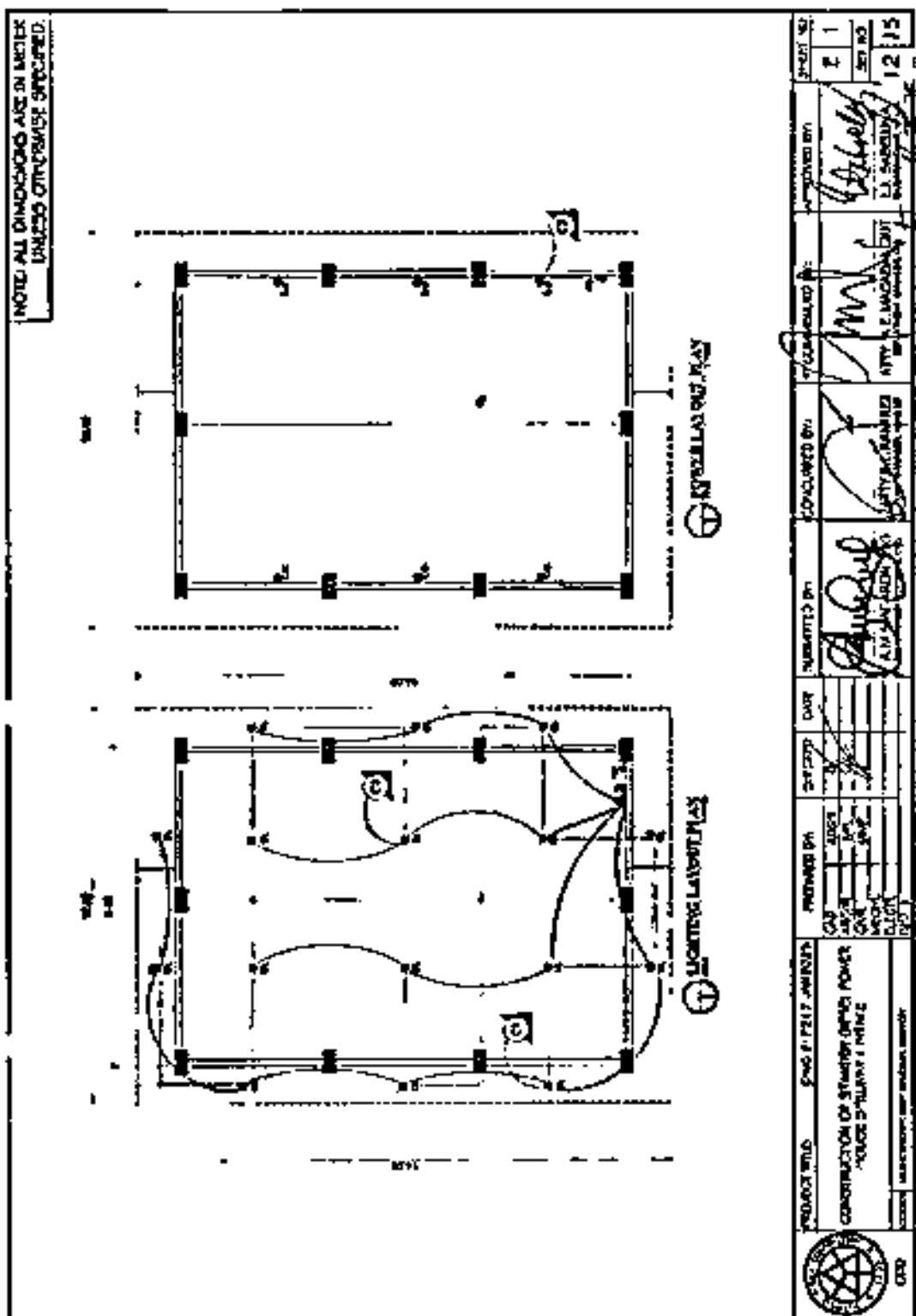
BID DOCUMENTS

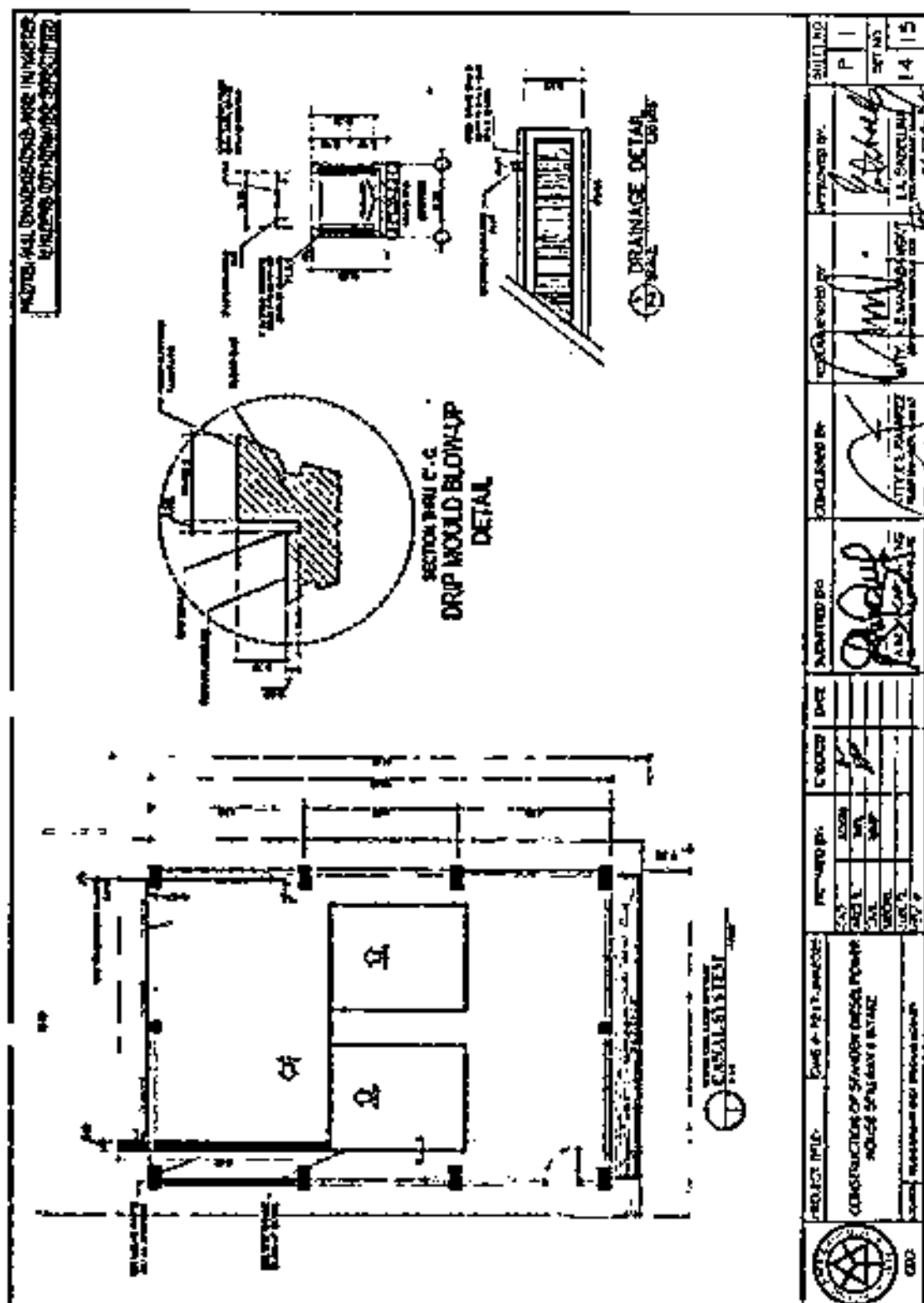
SECTION VIII-BILL OF QUANTITIES

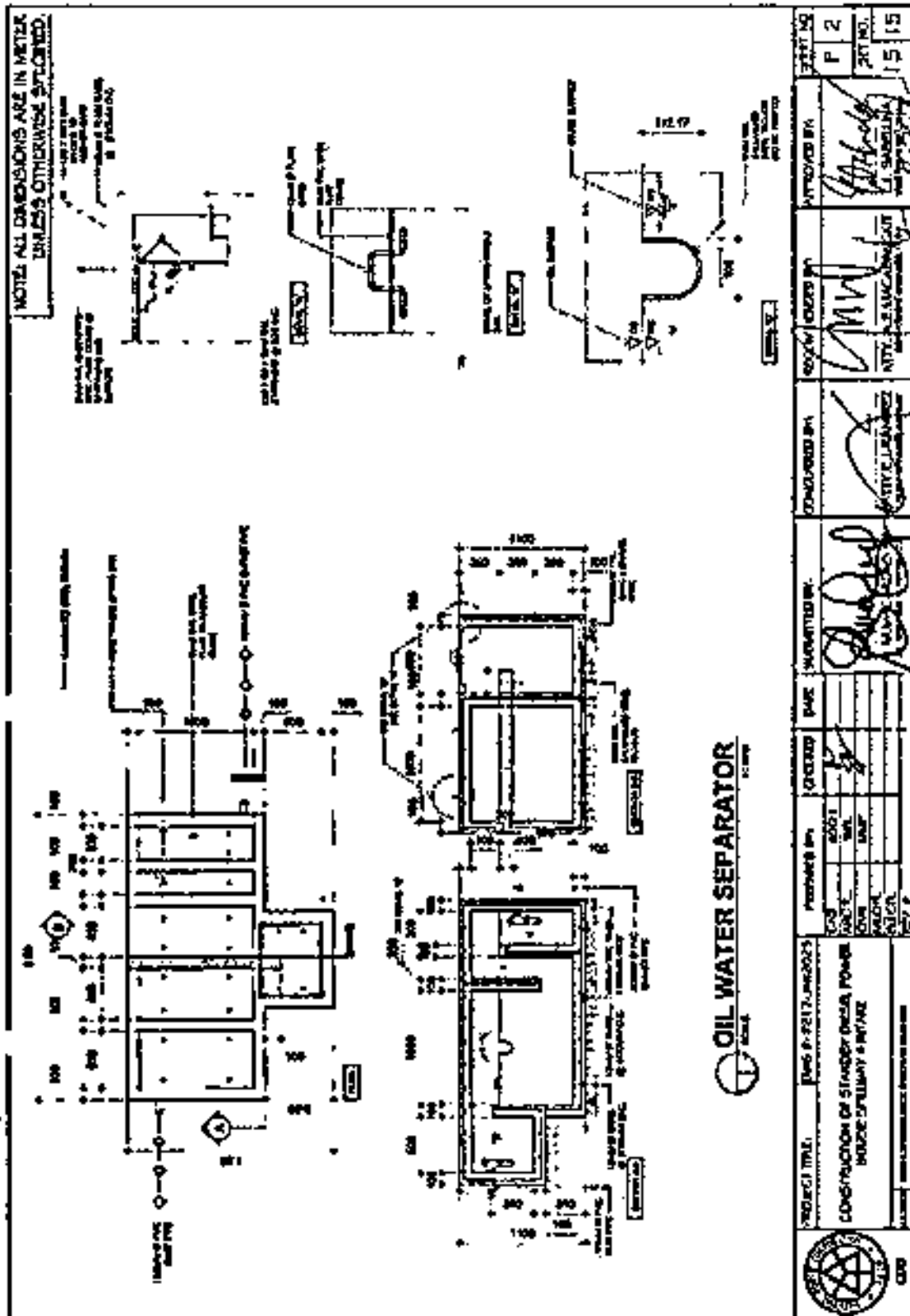
NAME OF PROJECT: ASM CONSTRUCTION OF STANDBY DIESEL
POWER HOUSE SPILLWAY & INTAKE

PR NO./REF. NO: MG-A7A25-126INFRA2025-AQS-029









Section VIII- Bill of Quantities

BILL OF QUANTITIES

Item No.	Description of Work	Estimated Quantity	Unit	Unit Price In Pesos		Total Amount
				Words	Figures	
1	CONSTRUCTION SAFETY AND HEALTH PROGRAM	1	LOT			
2	EARTHWORKS					
	A. Excavation	25.15	CU.M.		(Php _____)	Php _____
	B. Backfilling (for earthfill, use excavated materials)	17.00	CU.M.		(Php _____)	Php _____
3	CONCRETE WORKS	52.98	CU.M.		(Php _____)	Php _____
4	REINFORCEMENT DSB	6,965.00	KGS		(Php _____)	Php _____
5	ROOFING WORKS	181.00	SQ.M.		(Php _____)	Php _____
6	MASONRY WORKS					

	A. Laying of CHB	320.22	SQ.M.		(PhP _____)	PhP _____
	B. Plastering	576.90	SQ.M.		(PhP _____)	PhP _____
7	STEELWORKS	1	LOT		(PhP _____)	PhP _____
8	CEILING WORKS	145.60	SQ.M.		(PhP _____)	PhP _____
9	DOOR, ROLLUP & CABINET	1	LOT		(PhP _____)	PhP _____
10	ELECTRICAL WORKS	1	LOT		(PhP _____)	PhP _____
11	PAINTING WORKS (EXTERIOR)	180.80	SQ.M.		(PhP _____)	PhP _____
12	OIL WATER SEPARATOR	1	LOT		(PhP _____)	PhP _____

BID DOCUMENTS

NAME OF PROJECT: A6M CONSTRUCTION OF STANDBY DIESEL
POWER HOUSE SPILLWAY & INTAKE

SECTION IX- CHECKLIST OF TECHNICAL & FINANCIAL
DOCUMENTS

PR NO/REF. NO.: MG-A7M26-126/INFRA2025-A06-029

Section IX. Checklist of Technical and Financial Documents

Checklist of Technical and Financial Documents

I. TECHNICAL COMPONENT ENVELOPE [Submit in three (3) copies- one (1) marked Original with the understanding that the Pass/Fail evaluation will be based only on the copy marked "Original"]

Class "A" Documents

Legal Documents

- ☒ (a) Valid and updated PhilGEPS Registration Certificate (Platinum Membership) (all pages) *in accordance with Section 8.5.2 of the IRR;*

or

Technical Documents

- ☒ (b) Statement of the prospective bidder of all its ongoing government and private contracts, including contracts awarded but not yet started, if any, whether similar or not similar in nature and complexity to the contract to be bid, *using NPC-MinGen Standard Form No. NPCMGNSF-INFR-01; and*

- ☒ (c) Statement of the bidder's Single Largest Completed Contract (SLCC) similar to the contract to be bid, except under conditions provided under the rules, *using NPC-MinGen Standard Form No. NPCMGNSF-INFR-02 supported with the following documents:*

- *Contract and/or Notice to Proceed;*
- *For project completed less than one year from the scheduled date of bid opening, submit Certificate of Completion;*
- *For project completed at least one year from the scheduled date of bid opening, submit Owner's Certificate of Final Acceptance issued by the project owner other than the contractor, or a final rating of at least Satisfactory in the Constructor's Performance Evaluation System (CPES);*
- *In case of contracts with the private sector, an equivalent document (Ex. Official receipt) shall be submitted.*

and

- ☒ (d) Special PCAB License in case of Joint Ventures;
and registration for the type and cost of the contract to be bid; and

- ☒ (e) Original copy of Bid Security. If in the form of a Surety Bond, *using NPC-MinGen Standard Form No. NPCMGNSF-INFR-03a*, submit also a certification issued by the Insurance Commission;

or

Original copy of Notarized Bid Securing Declaration using NPC-MinGen Standard Form No. NPCMGNSF-INFR-03b; and

- ☒ (f) Project Requirements, which shall include the following:
a. Organizational chart for the contract to be bid *using NPC-*

MinGen Standard Form No. NPCMGNSF-INFR-04;

- b. List of contractor's key personnel (e.g., Project Manager, Project Engineers, Materials Engineers, and Foremen), to be assigned to the contract to be bid, with their complete qualification and experience data using NPC-MinGen Standard Form No. NPCMGNSF-INFR-05;



- c. List of contractor's major equipment units, which are owned, leased, and/or under purchase agreements, supported by proof of ownership or certification of availability of equipment from the equipment lessor/vendor for the duration of the project as the case may be, using NPC-MinGen Standard Form No. NPCMGNSF-INFR-06 and its supporting documents; and



- (g) Original duly signed Omnibus Sworn Statement (OSS), using any of the following NPC-MinGen Standard Forms No.:
NPCMGNSF-INFR-07a – for Sole Proprietorship;
or
NPCMGNSF-INFR-07b – for Partnership/Cooperative/Corporation/
Joint Venture with the following supporting documents;

and if applicable, Original Notarized Secretary's Certificate in case of a corporation, partnership, or cooperative; or Original Special Power of Attorney of all members of the joint venture giving full power and authority to its officer to sign the OSS and do acts to represent the Bidder.

Financial Documents

- (h) The prospective bidder's computation of Net Financial Contracting Capacity (NFCC) using NPC-MinGen Standard Form No. NPCMGNSF-INFR-08.

Class "B" Documents

- (i) If applicable, duly signed joint venture agreement (JVA) in accordance with RA No. 4566 and its IRR in case the joint venture is already in existence, using NPC-MinGen Standard Form No. NPCMGNSF-INFR-09;

or

duly notarized statements from all the potential joint venture partners stating that they will enter into and abide by the provisions of the JVA in the instance that the bid is successful.

II. FINANCIAL COMPONENT ENVELOPE *[Submit in three (3) copies- one (1) marked Original with the understanding that the Pass/Fail evaluation will be based only on the copy marked "Original"]*

- ☒ (j) Original of duly signed (each and every page) and accomplished Financial Bid Form, using NPC-MinGen Standard Form No. NPCMGNSF-INFR-10; and

Other documentary requirements under RA No. 9184

- ☒ (k) Original of duly signed (each and every page) Bid Prices in the Bill of Quantities, *using given form in Section VIII*; and
- ☒ (l) Duly signed (each and every page) and accomplished Detailed Estimates Form using NPC-MinGen Standard Form No. NPCMGNSF-INFR-11a, including NPC-MinGen Standard Form No. NPCMGNSF-INFR-11b Detailed Unit Price Analysis (DUPA) and Summary Sheet indicating the unit prices of construction materials, labor rates, and equipment rentals used in coming up with the Bid using NPC form NPCMGNSF-INFR-12; and
- ☒ (m) Duly signed each and every page Cash Flow by Quarter or Month, as applicable

**STANDARD BIDDING FORMS
NPC-MINDANAO GENERATION**

- NPCMGNSF-INFR-01 - List of all Ongoing Government & Private Construction Contracts Including Contracts Awarded but not yet Started
- NPCMGNSF-INFR-02 - Statement of the Bidder's Single Largest Completed Contract (SLCC) similar to the contract to be bid
- NPCMGNSF-INFR-03a - Form of Bid Security : Surety Bond
- NPCMGNSF-INFR-03b - Bid Securing Declaration Form
- NPCMGNSF-INFR-04 - Contractor's Organizational Chart for the Project
- NPCMGNSF-INFR-05 - List of Key Personnel Proposed to be Assigned to the Project
- NPCMGNSF-INFR-06 - List of Equipment, Owned or Leased and/or under Purchase Agreement, Pledged to the Proposed Project
- NPCMGNSF-INFR-07a - Omnibus Sworn Statement (Sole Proprietorship)
- NPCMGNSF-INFR-07b - Omnibus Sworn Statement (Partnership/ Cooperative/Corporation//Joint Venture)
- NPCMGNSF-INFR-08 - Computation of Net Financial Contracting Capacity (NFCC)
- NPCMGNSF-INFR-09 - Joint Venture Agreement
- NPCMGNSF-INFR-10 - Bid Form
- NPCMGNSF-INFR-11a - Detailed Cost Estimate Form
- NPCMGNSF-INFR-11b - Detailed Unit Price Analysis (DUPA)
- NPCMGNSF-INFR-12 - Summary Sheets of Materials Prices, Labor Rates and Equipment Rental Rates

BID DOCUMENTS

SECTION IX-CHECKLIST OF TECHNICAL & FINANCIAL DOCUMENTS

NAME OF PROJECT: ADDA CONSTRUCTION OF STANDEBY DIESEL POWER HOUSE SPLYWAY & INTAKE PR NO./REF. NO.: MEG-AJINCS-1288/PR/2003-A06-028

Standard Form Number : NPCMGNSE-INTER-01

List of All Ongoing Government and Private Construction Contracts Awarded But Not Yet Started

Business Name	_____
Business Address	_____

[illegible]

The bidder shall declare in this form all his ongoing government and private contracts including contracts where the bidder (either as individual or as a joint venture) is a partner in a joint venture as a consultant or as a partner. Non declaration will be a ground for disqualification of bid.

Note: This statement shall be supported with Contract and/or Notice of Award (to be presented by the winning bidder during postqualification).

Submitted by	_____
Designation	_____
Date	_____

BID DOCUMENTS

NAME OF PROJECT: ASM CONSTRUCTION OF STANDBY
DIESEL POWER HOUSE SPILLWAY & INTAKE
PR NO./REF. NO.: AQ-AJMS-128/INFRA2023-AQ26-029

SECTION IX- CHECKLIST OF TECHNICAL &
FINANCIAL DOCUMENTS

Standard Form Number: NPCMAGNSF-INFRA-02

The Statement of the Bidder's Single Largest Completed Contract (SLCC) similar to the contract to be bid

Business Name : _____
Business Address : _____

Name of Contract	a. Owner's Name b. Address c. Telephone Nos.	Nature of Work	Contractor's Role		a. Amount at Award b. Amount at Completion c. Duration	a. Date Awarded b. Contract Effectivity c. Date Completed
			Description	%		
					5	

Note: The bidder must state only one (1) Single Largest Completed Contract (SLCC) similar to the contract to be bid with an amount equivalent to at least fifty percent (50%) of the ABC. This Statement shall be supported with:

1. Contract and/or Notice to Proceed
2. Certificate of Completion (for project completed within the year), or Owner's Certificate of Final Acceptance (for project completed after the lapse of one year) issued by the project owner other than the contractor, or a final rating of at least Satisfactory in the Contractor's Performance Evaluation System (CPES).
In case of the contracts with the private sector, an equivalent document (Ex. Official Receipt) shall be accepted.

Submitted by : _____
(Printed Name & Signature)

Designation : _____
Date : _____

SECTION IX- CHECKLIST OF TECHNICAL &
FINANCIAL DOCUMENTS

Standard Form No: NPCMGNSF-INFR-03a

FORM OF BID SECURITY (SURETY BOND)

BOND NO.: _____
DATE BOND EXECUTED: _____

By this bond, We (Name of Bidder) (hereinafter called "the Principal") and (Name of Surety) of (Name of Country of Surety), authorized to transact business in the Philippines (hereinafter called "the Employer") as Obligees, in the sum of Amount in words & figures as prescribed in the bidding documents, callable on demand, for the payment of which sum, well and truly to be made, we, the said Principal and Surety bind ourselves, our successors and assigns, jointly and severally, firmly by these presents.

SEALED with our seals and dated this _____ day of _____, 20____

WHEREAS, the Principal has submitted a written Bid to the Employer dated the _____ day of _____, 20____, for the _____ (hereinafter called "the Bid").

NOW THEREFORE, the conditions of this obligation are:

- 1) If the Bidder withdraws his Bid during the period of bid validity specified in the Bidding Documents; or
- 2) If the Bidder does not accept the correction of arithmetical errors of his bid price in accordance with the Instructions to Bidder; or
- 3) If the Bidder, having determined as the LCB, fails or refuses to submit the required tax clearance, latest income and business tax returns and PhilGEPS registration certificate within the prescribed period; or
- 4) If the bidder having been notified of the acceptance of his bid and award of contract to him by the Entity during the period of bid validity:
 - a) Fails or refuses to execute the Contract; or
 - b) Fails or refuses to submit the required valid JVA, if applicable; or
 - c) Fails or refuses to furnish the Performance Security in accordance with the Instruction to Bidders;

Then this obligation shall remain in full force and effect, otherwise it shall be null and void.

SECTION IX- CHECKLIST OF TECHNICAL &
FINANCIAL DOCUMENTS

Standard Form No: NPCMGNSF-INFR-03a
Page 2 of 2

PROVIDED HOWEVER, that the Surety shall not be:

- a) Liable for a grater sum than the specified penalty of this bond, nor
- b) Liable for a greater sum that the difference between the amount of the said Principal's Bid and the amount of the Bid that is accepted by the Employer.

This Surety executing this Instrument hereby agrees that its obligation shall be valid for 120 calendar days after the deadline for submission of Bids as such deadline is stated in the Instructions to Bidders or as it may be extended by the Employer, notice of which extension(s) to the Surety is hereby waived.

PRINCIPAL

SURETY

SIGNATURE(S)

SIGNATURE(S)

NAME(S) AND TITLE (S)

NAME(S)

SEAL

SEAL

Standard Form No: NPCMGNSF-INFRA-03b

REPUBLIC OF THE PHILIPPINES)
CITY OF _____) S.S.

BID SECURING DECLARATION
Project Identification No.: [Insert number]

To: [Insert name and address of the Procuring Entity]

I/We, the undersigned, declare that:

1. I/We understand that, according to your conditions, bids must be supported by a Bid Security, which may be in the form of a Bid Securing Declaration.
2. I/We accept that: (a) I/we will be automatically disqualified from bidding for any procurement contract with any procuring entity for a period of two (2) years upon receipt of your Blacklisting Order; and, (b) I/we will pay the applicable fine provided under Section 6 of the Guidelines on the Use of Bid Securing Declaration, within fifteen (15) days from receipt of the written demand by the procuring entity for the commission of acts resulting to the enforcement of the bid securing declaration under Sections 23.1(b), 34.2, 40.1 and 69.1, except 69.1(f), of the IRR of RA No. 9184; without prejudice to other legal action the government may undertake.
3. I/We understand that this Bid Securing Declaration shall cease to be valid on the following circumstances:
 - a. Upon expiration of the bid validity period, or any extension thereof pursuant to your request;
 - b. I am/we are declared ineligible or post-disqualified upon receipt of your notice to such effect, and (i) I/we failed to timely file a request for reconsideration or (ii) I/we filed a waiver to avail of said right; and
 - c. I am/we are declared the bidder with the Lowest Calculated Responsive Bid, and I/we have furnished the performance security and signed the Contract.

IN WITNESS WHEREOF, I/We have hereunto set my/our hand/s this ____ day of [month] [year] at [place of execution].

[Insert NAME OF BIDDER OR ITS
AUTHORIZED REPRESENTATIVE]
[Insert signatory's legal capacity]
Affiant

[Jurat]

[Format shall be based on the latest Rules on Notarial Practice]

Standard Form No: NPCMGNSF-INFR-04

CONTRACTOR'S ORGANIZATIONAL CHART FOR THE CONTRACT

Submit Copy of the Organizational Chart that the Contractor intends to use to execute the Contract if awarded to him. Indicate in the chart the names of the Project Manager, Project Engineer, Foreman and other Key Engineering Personnel.

Attach the required Proposed Organizational Chart for the Contract as stated above

NOTES:

- 1. This organization chart should represent the "Contractor's Organization" required for the Project, and not the organizational chart of the entire firm.*
- 2. Each such nominated engineer/key personnel shall comply with and submit their complete qualification and experience data only during post-qualification.*

BID DOCUMENTS

NAME OF PROJECT: ARM CONSTRUCTION OF STANDBY
DIESEL POWER HOUSE SPILLWAY & INTAKE
PR NO. REF. NO.: MG-A7M25-128/04FRA2023-AGE-029

SECTION IX- CHECKLIST OF TECHNICAL & FINANCIAL DOCUMENTS

Standard Form Number : NPCM/GNSF-INFR-05

LIST OF KEY PERSONNEL PROPOSED TO BE ASSIGNED TO THE CONTRACT (Based on the Minimum Key Personnel Required in the Bidding Documents)

Business Name :
Business :

		DESIGNATION			
1. Name					
2. Address					
3. Date of Birth					
4. Employed Since					
5. Experience (No. of Years)					
6. Previous Employment					
7. Education					
8. PRC License/NC II/CDSH/Other required certificate					

Required documents to be presented during Post-qualification:

1. Certificate of Employment and valid PRC License of the (professional) personnel
2. Certificate of Employment and Certificate of Training with accreditation from DOLE of the Construction Safety and Health Officer
3. Diploma and/or Service Record/Certificate of Employment of previous and/or current employer of Foreman, Welder, Plumber or Electrician, whichever is applicable
4. TESDA Certificate (NC II) of Welder, Plumber or Electrician, whichever is applicable. Valid PRC License for Registered Master Plumber and Registered Master Electrician

Submitted by:

Printed name & Signature

Designation:

Date:

BID DOCUMENTS

NAME OF PROJECT: AGM CONSTRUCTION OF STANDBY
DIESEL POWER HOUSE SPILLWAY & INTAKE
PR NO./REF. NO.: MQ-ATMS-1200/INFRASTR-AQM-020

SECTION DG: CHECKLIST OF TECHNICAL & FINANCIAL DOCUMENTS

Standard Form Number: NPQMGNSE-INFRA-06

LIST OF EQUIPMENT, OWNED OR LEASED AND/OR UNDER PURCHASE AGREEMENTS (Based on the Minimum Equipment Required in the Bidding Document(s))

Business Name: _____
Business: _____

Description	Model/Year	Capacity/ Performance / Size	Plate No.	Motor No. / Body No.	Location	Condition	Proof of Ownership / Lessor or Vendor
A. Owned							
i.							
ii.							
iii.							
iv.							
B. Leased							
i.							
ii.							
iii.							
iv.							
C. Under Purchased Agreements							
i.							
ii.							
iii.							
iv.							

Submitted by: _____

(Printed name & signature)

Designation: _____

Date: _____

One of the requirements from the bidder to be included in its Technical Envelope is the list of its equipment units pledged for the contract to be bid, based on minimum equipment required in the bidding docs, which are owned (supported by proofs of ownership), leased, and/or under purchase agreements (with corresponding engine numbers, chassis numbers and/or serial numbers), supported by certification of availability of equipment from the equipment lessor/vendor for the duration of the project.

Standard Form No: NPCMGNSF-INFRA-07a

**Omnibus Sworn Statement (Revised)
(SOLE PROPRIETORSHIP)**

REPUBLIC OF THE PHILIPPINES)
CITY/MUNICIPALITY OF _____) S.S.

AFFIDAVIT

I, [Name of Affiant], of legal age, [Civil Status], [Nationality], and residing at [Address of Affiant], after having been duly sworn in accordance with law, do hereby depose and state that:

1. I am the sole proprietor or authorized representative of [Name of Bidder] with office address at [address of Bidder];
2. As the owner and sole proprietor, or authorized representative of [Name of Bidder], I have full power and authority to do, execute and perform any and all acts necessary to participate, submit the bid, and to sign and execute the ensuing contract for [Name of the Project] of the National Power Corporation-Mindanao Generation, as shown in the attached duly notarized Special Power of Attorney;
3. [Name of Bidder] is not "blacklisted" or barred from bidding by the Government of the Philippines or any of its agencies, offices, corporations, or Local Government Units, foreign government/foreign or international financing Institution whose blacklisting rules have been recognized by the Government Procurement Policy Board, by itself or by relation, membership, association, affiliation, or controlling interest with another blacklisted person or entity as defined and provided for in the Uniform Guidelines on Blacklisting;
4. Each of the documents submitted in satisfaction of the bidding requirements is an authentic copy of the original, complete, and all statements and information provided therein are true and correct;
5. [Name of Bidder] is authorizing the Head of the Procuring Entity or its duly authorized representative(s) to verify all the documents submitted;
6. The owner or sole proprietor is not related to the Head of the Procuring Entity, members of the Bids and Awards Committee (BAC), the Technical Working Group, and the BAC Secretariat, the head of the Project Management Office or the end-user unit, and the project consultants by consanguinity or affinity up to the third civil degree;
7. [Name of Bidder] complies with existing labor laws and standards; and

Standard Form No: NPCMGNSF-INFRA-07a
Page 2 of 2

8. [Name of Bidder] is aware of and has undertaken the responsibilities as a Bidder in compliance with the Philippine Bidding Documents, which includes:
- Carefully examining all of the Bidding Documents;
 - Acknowledging all conditions, local or otherwise, affecting the Implementation of the Contract;
 - Making an estimate of the facilities available and needed for the contract to be bid, if any; and
 - Inquiring or securing Supplemental/Bid Bulletin(s) issued for the [Name of the Project].
9. [Name of Bidder] did not give or pay directly or indirectly, any commission, amount, fee, or any form of consideration, pecuniary or otherwise, to any person or official, personnel or representative of the government in relation to any procurement project or activity.
10. In case advance payment was made or given, failure to perform or deliver any of the obligations and undertakings in the contract shall be sufficient grounds to constitute criminal liability for Swindling (Estafa) or the commission of fraud with unfaithfulness or abuse of confidence through misappropriating or converting any payment received by a person or entity under an obligation involving the duty to deliver certain goods or services, to the prejudice of the public and the government of the Philippines pursuant to Article 315 of Act No. 3815 s. 1930, as amended, or the Revised Penal Code.

IN WITNESS WHEREOF, I have hereunto set my hand this ___ day of ___, 20__ at _____, Philippines.

[Insert NAME OF BIDDER OR ITS
AUTHORIZED REPRESENTATIVE]
[Insert signatory's legal capacity]
Affiant

[Jurat]
[Format shall be based on the latest Rules on Notarial Practice]

Standard Form No: NPCMGNSF-INFR-07b

Omnibus Sworn Statement (Revised)
PARTNERSHIP/COOP/CORP/JOINT VENTUREREPUBLIC OF THE PHILIPPINES)
CITY/MUNICIPALITY OF _____) S.S.

AFFIDAVIT

I, [Name of Affiant], of legal age, [Civil Status], [Nationality], and residing at [Address of Affiant], after having been duly sworn in accordance with law, do hereby depose and state that:

1. I am the duly authorized and designated representative of [Name of Bidder] with office address at [address of Bidder];
2. I am granted full power and authority to do, execute and perform any and all acts necessary to participate, submit the bid, and to sign and execute the ensuing contract for [Name of the Project] of the National Power Corporation-Mindanao Generation, as shown in the attached [state title of attached document showing proof of authorization (e.g., duly notarized Secretary's Certificate, Board/Partnership Resolution, or Special Power of Attorney, whichever is applicable)];
3. [Name of Bidder] is not "blacklisted" or barred from bidding by the Government of the Philippines or any of its agencies, offices, corporations, or Local Government Units, foreign government/foreign or international financing institution whose blacklisting rules have been recognized by the Government Procurement Policy Board, by itself or by relation, membership, association, affiliation, or controlling interest with another blacklisted person or entity as defined and provided for in the Uniform Guidelines on Blacklisting;
4. Each of the documents submitted in satisfaction of the bidding requirements is an authentic copy of the original, complete, and all statements and information provided therein are true and correct;
5. [Name of Bidder] is authorizing the Head of the Procuring Entity or its duly authorized representative(s) to verify all the documents submitted;
6. [If a partnership or cooperative:] None of the officers and members of [Name of Bidder] is related to the Head of the Procuring Entity, members of the Bids and Awards Committee (BAC), the Technical Working Group, and the BAC Secretariat, the head of the Project Management Office or the end-user unit, and the project consultants by consanguinity or affinity up to the third civil degree;

SECTION IX: CHECKLIST OF TECHNICAL &
FINANCIAL DOCUMENTS

Standard Form No: NPCMGNSF-INF-07b

Page 2 of 2

[If a corporation or joint venture:] None of the officers, directors, and controlling stockholders of [Name of Bidder] is related to the Head of the Procuring Entity, members of the Bids and Awards Committee (BAC), the Technical Working Group, and the BAC Secretariat, the head of the Project Management Office or the end-user unit, and the project consultants by consanguinity or affinity up to the third civil degree;

7. [Name of Bidder] complies with existing labor laws and standards; and
8. [Name of Bidder] is aware of and has undertaken the responsibilities as a Bidder in compliance with the Philippine Bidding Documents, which includes:
 - a. Carefully examining all of the Bidding Documents;
 - b. Acknowledging all conditions, local or otherwise, affecting the implementation of the Contract;
 - c. Making an estimate of the facilities available and needed for the contract to be bid, if any; and
 - d. Inquiring or securing Supplemental/Bid Bulletin(s) Issued for the [Name of the Project].
9. [Name of Bidder] did not give or pay directly or indirectly, any commission, amount, fee, or any form of consideration, pecuniary or otherwise, to any person or official, personnel or representative of the government in relation to any procurement project or activity.
10. In case advance payment was made or given, failure to perform or deliver any of the obligations and undertakings in the contract shall be sufficient grounds to constitute criminal liability for Swindling (Estafa) or the commission of fraud with unfaithfulness or abuse of confidence through misappropriating or converting any payment received by a person or entity under an obligation involving the duty to deliver certain goods or services, to the prejudice of the public and the government of the Philippines pursuant to Article 315 of Act No. 3815 s. 1930, as amended, or the Revised Penal Code.

IN WITNESS WHEREOF, I have hereunto set my hand this ____ day of ____, 20__ at _____, Philippines.

[Insert NAME OF BIDDER OR ITS
AUTHORIZED REPRESENTATIVE]
[Insert signatory's legal capacity]
Affiant

[Jurat]

[Format shall be based on the latest Rules on Notarial Practice]

Standard Form No: NPCMGNSF-INFN-08

NET FINANCIAL CONTRACTING CAPACITY (NFCC)

- A. Summary of the Bidder's/Contractor's assets and liabilities on the basis of the income tax return and audited financial statement for the immediately preceding calendar year are:

		Year 20
1.	Total Assets	
2.	Current Assets	
3.	Total Liabilities	
4.	Current Liabilities	
5.	Net Worth (1-3)	
6.	Net Working Capital (2-4)	

- B. The Net Financial Contracting Capacity (NFCC) based on the above data is computed as follows:

NFCC = [(Current assets minus current liabilities) x 15] minus the value of all outstanding or uncompleted portions of the projects under ongoing contracts, including awarded contracts yet to be started coinciding with the contract for this Project.

NFCC – P _____

Herewith attached is certified true copy of the audited financial statement, stamped "RECEIVED" by the BIR or BIR authorized collecting agent for the immediately preceding calendar year.

Submitted by:

Name of Bidder/Contractor

Signature of Authorized
Representative

Date: _____

Standard Form No: NPCMGNSF-INFR-09

JOINT VENTURE AGREEMENT**KNOW ALL MEN BY THESE PRESENTS:**

That this JOINT VENTURE AGREEMENT is entered in to by and between;
_____, of legal age, (civil status) _____, authorized representative
of _____ and a resident of _____.

• and •

_____, of legal age, (civil status) _____, authorized representative of
_____ and a resident of _____.

That both parties agree to join together their capital, manpower, equipment, and other resources and efforts to enable the Joint Venture to participate in the Bidding and Undertaking of the hereunder stated Contract of the National Power Corporation.

NAME OF FIRM	CAPITAL CONTRIBUTION

That the capital contribution of each member firm:

NAME OF FIRM	CAPITAL CONTRIBUTION
1	PHP
2	PHP

That both parties agree to be jointly and severally liable for their participation in the Bidding and Undertaking of the said contract.

That both parties agree that _____ and/or _____ shall be the Official Representative/s of the Joint Venture, and are granted full power and authority to do, execute and perform any and all acts necessary and/or to represent the Joint Venture in the Bidding and Undertaking of the said contract, as fully and effectively and the Joint Venture may do and if personally present with full power of substitution and revocation.

That this Joint Venture Agreement shall remain in effect only for the above stated Contract until terminated by both parties.

BID DOCUMENTS

**SECTION IX- CHECKLIST OF TECHNICAL &
FINANCIAL DOCUMENTS**

**NAME OF PROJECT: A&M CONSTRUCTION OF STANDBY
DIESEL POWER HOUSE SPILLWAY & INTAKE
PR NO./REF. NO.: MG-A7M25-12B/MFRA2026-AG8-029**

**Name & Signature of Authorized
Representative**

Official Designation

Name of Firm

**Name & Signature of
Authorized Representative**

Official Designation

Name of Firm

Witnesses

*If the bidder is a joint venture, one of the requirements is the submission of a valid joint
venture agreement.*

Standard Form No: NPCMGNSF-INFR-09

Page 2 of 2

ACKNOWLEDGEMENT

BEFORE ME, a Notary Public for and in _____, Philippines, this _____ day of _____, 20____, personally appeared _____, authorized representative, of _____ with Community Tax Certificate No. _____, issued at _____, on _____, AND _____ authorized representative, of _____ with Community Tax Certificate No. _____, issued at _____, on _____ known to me to be the same person who executed the foregoing instrument consisting of two (2) pages, including the page whereon the acknowledgements are written, all pages signed by both parties and their instrumental witnesses and they acknowledged before me that the same are their free and voluntary acts and deeds and that of the Corporations they represents.

WITNESS MY HAND AND NOTARIAL SEAL, at the place and on the date first above written.

Notary Public

Until 31 December _____

PTR No. _____

Issued at: _____

Issued on: _____

TIN No. _____

Doc. No. _____

Page _____

Book _____

Series _____

If the bidder is a joint venture, one of the requirements is the submission of a valid joint venture agreement.

Standard Form No: NPCMGNSF-INFR-10

Bid Form for the Procurement of Infrastructure Projects

BID FOR Date : _____

Project Identification No. : _____

To: **The Vice President**
National Power Corporation
Mindanao Generation
Maria Cristina, Iligan City

Having examined the Philippine Bidding Documents (PBDs) including the Supplemental or Bid Bulletin Numbers insert numbers, the receipt of which is hereby duly acknowledged, we, the undersigned, declare that:

- a. We have no reservation to the PBDs, including the Supplemental or Bid Bulletins, for the Procurement Project: insert name of contract;
- b. We offer to execute the Works for this Contract in accordance with the PBDs;
- c. The total price of our Bid in words and figures, excluding any discounts offered below is: insert information;
- d. The discounts offered and the methodology for their application are: insert information;
- e. The total bid price includes the cost of all taxes, such as, but not limited to: specify the applicable taxes, e.g. (i) value added tax (VAT), (ii) income tax, (iii) local taxes, and (iv) other fiscal levies and duties, which are itemized herein and reflected in the detailed estimates;
- f. Our Bid shall be valid within the a period stated in the PBDs, and it shall remain binding upon us at any time before the expiration of that period;
- g. If our Bid is accepted, we commit to obtain a Performance Security in the amount of insert percentage amount percent of the Contract Price for the due performance of the Contract, or a Performance Securing Declaration in lieu of the the allowable forms of Performance Security, subject to the terms and conditions of issued GPPB guidelines¹ for this purpose;

¹ currently based on GPPB Resolution No. 09-2020

Standard Form No: NPCMGNSF-INF-10

Page 2 of 2

- h. We are not participating, as Bidders, in more than one Bid in this bidding process, other than alternative offers in accordance with the Bidding Documents;**
- i. We understand that this Bid, together with your written acceptance thereof included in your notification of award, shall constitute a binding contract between us, until a formal Contract is prepared and executed; and**
- j. We understand that you are not bound to accept the Lowest Calculated Bid or any other Bid that you may receive.**
- k. We likewise certify/confirm that the undersigned, is the duly authorized representative of the bidder, and granted full power and authority to do, execute and perform any and all acts necessary to participate, submit the bid, and to sign and execute the ensuing contract for the Name of Project of the National Power Corporation-Mindanao Generation.**
- l. We acknowledge that failure to sign each and every page of this Bid Form, including the Bill of Quantities, shall be a ground for the rejection of our bid.**

Name:

Legal Capacity:

Signature:

Duly authorized to sign the Bid for and behalf of:

Date: _____

NAME OF PROJECT: ASH CONSTRUCTION OF STANDBY
DIESEL POWER HOUSE SPILLWAY & INTAKE
PR NO./REF. NO.: MG-A7425-125/INFRA2025-A06-020

PR INQUIRY NO.: MG-A7A25-1261NFR32023-AC4-029

Standard Form Number: NDCMIGVSE-IMFR-110

DETAILED COST ESTIMATE FORM

Name of Bidder

[illegible]

Note: Bidders shall support this form with Detailed Unit Price Analysis (DUPA) using NCMGNSF-INF-118

Name, Signature of Authorized Representative

Classification

NAME OF PROJECT: ASM CONSTRUCTION OF STANDBY

DIESEL POWER HOUSE SPILLWAY & INTAKE

PR NO./REF. NO.: MG-A7M25-128/MFRA2025-AD8-029

Standard Form Number: AFPC/AG/CSF-00070-11b

DETAILED UNIT PRICE ANALYSIS

PAY ITEM	PAY ITEM DESCRIPTION	QTY	UNIT		
1	MATERIALS				
1					
2					
3					
4					
5					
				TOTAL MATERIAL COST	
6	LABOR				
1					
2					
3					
4					
				TOTAL LABOR COST	
7	EQUIPMENT RENTAL				
1					
2					
3					
				TOTAL EQUIPMENT COST	
				TOTAL ESTIMATED DIRECT COST, EDC	
	OVERHEAD, CONTINGENCY & MISCELLANEOUS			%	
	VALUE ADDED TAX			12%	
	PROFIT			%	
				TOTAL INDIRECT COST, IDC	
				TOTAL COST OF PAY ITEM	
				UNIT COST OF PAY ITEM	

10/1/2014

Standard Form No: NPCMGNSF-INFR-12

**SUMMARY SHEETS OF MATERIALS PRICES, LABOR RATES AND
EQUIPMENT RENTAL RATES**

Name of Bidder: _____

I. Unit Prices of Materials

Materials Description

Unit

Unit Price

II. Manpower Hourly Rates

Designation

Rate/Hr.

III. Equipment Hourly Rental Rates

Equipment Description

Rental Rate/Hr.

Name, Signature of Authorized Representative_____
Designation

Performance Securing Declaration (Revised)

(If used as an alternative performance security but it is not required to be submitted with the Bid, as it shall be submitted within ten (10) days after receiving the Notice of Award)

REPUBLIC OF THE PHILIPPINES)
CITY OF _____) S.S.

PERFORMANCE SECURING DECLARATION

Invitation to Bid: [Insert Reference Number Indicated In the Bidding Documents]
To: [Insert name and address of the Procuring Entity]

I/We, the undersigned, declare that:

1. I/We understand that, according to your conditions, to guarantee the faithful performance by the supplier/distributor/manufacturer/contractor/consultant of its obligations under the Contract, I/we shall submit a Performance Securing Declaration within a maximum period of ten (10) calendar days from the receipt of the Notice of Award prior to the signing of the Contract.
2. I/We accept that: I/we will be automatically disqualified from bidding for any procurement contract with any procuring entity for a period of one (1) year for the first offense, or two (2) years for the second offense, upon receipt of your Blacklisting Order if I/We have violated my/our obligations under the Contract;
3. I/We understand that this Performance Securing Declaration shall cease to be valid upon:
 - a. Issuance by the Procuring Entity of the Certificate of Final Acceptance, subject to the following conditions:
 - i. Procuring Entity has no claims filed against the contract awardee;
 - ii. It has no claims for labor and materials filed against the contractor; and
 - iii. Other terms of the contract; or
 - b. replacement by the winning bidder of the submitted PSD with a performance security in any of the prescribed forms under Section 39.2 of the 2016 revised IRR of RA No. 9184 as required by the end-user.

BID DOCUMENTS

SECTION IX- CHECKLIST OF TECHNICAL &
FINANCIAL DOCUMENTS

NAME OF PROJECT: ABM CONSTRUCTION OF STANDBY
DIESEL POWER HOUSE SPILLWAY & INTAKE
PR NO./REF. NO.: MG-A7M25-12/MINFRA2025-AG6-029

IN WITNESS WHEREOF, I/We have hereunto set my/our hand/s this ____ day of
[month] [year] at [place of execution].

[Insert NAME OF BIDDER OR ITS
AUTHORIZED REPRESENTATIVE]
[Insert signatory's legal capacity]
Affiant

[Jurat]

[Format shall be based on the latest Rules on Notarial Practice]

**Contract Agreement Form for the
Procurement of Infrastructure Projects (Revised)**
*[not required to be submitted with the Bid, but it shall be submitted within ten
(10) days after receiving the Notice of Award]*

CONTRACT AGREEMENT

THIS AGREEMENT, made this *[insert date]* day of *[insert month]*, *[insert year]* between *[name and address of PROCURING ENTITY]* (hereinafter called the "Entity") and *[name and address of Contractor]* (hereinafter called the "Contractor").

WHEREAS, the Entity is desirous that the Contractor execute *[name and identification number of contract]* (hereinafter called "the Works") and the Entity has accepted the Bid for *[contract price in words and figures in specified currency]* by the Contractor for the execution and completion of such Works and the remedying of any defects therein.

NOW THIS AGREEMENT WITNESSETH AS FOLLOWS:

1. In this Agreement, words and expressions shall have the same meanings as are respectively assigned to them in the Conditions of Contract hereinafter referred to.
2. The following documents as required by the 2016 revised Implementing Rules and Regulations of Republic Act No. 9184 shall be deemed to form and be read and construed as part of this Agreement, viz.:
 - a. Philippine Bidding Documents (PBDs):
 - i. Drawings/Plans;
 - ii. Specifications;
 - iii. Bill of Quantities;
 - iv. General and Special Conditions of Contract;
 - v. Supplemental or Bid Bulletins, if any;
 - b. Winning bidder's bid, including the Eligibility requirements, Technical and Financial Proposals, and all other documents or statements submitted;

Bid form, including all the documents/statements contained in the Bidder's bidding envelopes, as annexes, and all other documents submitted (e.g., Bidder's response to request for clarifications on the bid), including corrections to the bid, if any, resulting from the Procuring Entity's bid evaluation;

- c. Performance Security;

- d. Notice of Award of Contract and the Bidder's conforme thereto; and
- e. Other contract documents that may be required by existing laws and/or the Procuring Entity concerned in the PBDs. Winning bidder agrees that additional contract documents or information prescribed by the GPPB that are subsequently required for submission after the contract execution, such as the Notice to Proceed, Variation Orders, and Warranty Security, shall likewise form part of the Contract.
3. In consideration for the sum of *[total contract price in words and figures]* or such other sums as may be ascertained, *[Named of the bidder]* agrees to *[state the object of the contract]* in accordance with his/her/its Bid.
4. The *[Name of the procuring entity]* agrees to pay the above-mentioned sum in accordance with the terms of the Bidding.

IN WITNESS whereof the parties thereto have caused this Agreement to be executed the day and year first before written.

[Insert Name and Signature]

[Insert Signatory's Legal Capacity]

for:

[Insert Procuring Entity]

[Insert Name and Signature]

[Insert Signatory's Legal Capacity]

for:

[Insert Name of Supplier]

Acknowledgment

[Format shall be based on the latest Rules on Notarial Practice]

Republic of the Philippines



Government Procurement Policy Board